

GENERAL PURPOSE ENGINE

GXH50

PARTS CATALOGUE

6

FOREWORD INDEX

1

ENGINE GROUP

2

PART NUMBER INDEX

3

PART NAME INDEX

4

Instruction for use of parts catalogue

- **This parts catalogue was prepared based on the latest information available as of June 10, 2004.**
- See the parts catalogue news for any revision that is made after June 10, 2004.
- **Always specify the part number when ordering a part.**
 - Check the model, type, serial numbers, color, maker, and the size as needed before ordering a part.
 - Note that the illustrations (part drawings) can differ from the actual parts in shape. They are given just to help you to refer to the parts.
- **When modifications or additions to this parts catalogue are made, a revised edition will be issued at an appropriate time, with successively progressing revision numbers on the cover. We recommend obtaining such revisions in order to keep your parts catalogue up-to-date at all times. To check whether a parts catalogue revision has been issued, please contact your Honda distributor.**

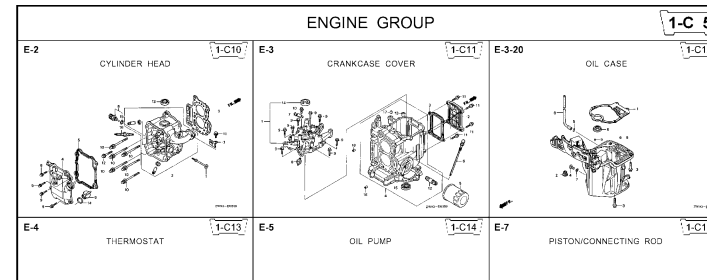
Initial version issue date **June 10, 2004**
Honda Motor Co., Ltd.

CONTENTS

	Page	Address No.	
• How to refer to the part information	2	B 2	1
• Part catalogue structure	3	B 3	
• When the parts were revised	4	B 4	
• Abbreviations used in the parts catalogue.....	4	B 4	
• How to check the part block and serial numbers.....	5	B 5	
• Models, parts catalogue codes and applicable serial numbers	6	B 6	
• Features of each type.....	8	B 8	
• Fuel hose, general purpose hoses and vinyl hose.....	9	B 9	
• Illustrated index	10	B10	
• ENGINE GROUP.....	12	C 1	2
• PART NO. INDEX.....	35	E 1	3
• PART NAME INDEX.....	37	F 1	4

How to refer to the part information

A Reference with "Illustrated index"



B Reference with "Part number index"

PART NO. INDEX

Part Number	Address	Page	Ref.	Part Number	Address	Page
06000				15212-ZW9-000	1-C14	3C
06316-ZW9-000	1-G9	88	1	15220-ZW9-003	1-C14	3C
11000				15332-ZW9-000	1-E8	55
11300-ZW9-405	1-C11	27	1	15332-ZW9-A30	1-E11	5E
11300-ZW9-406	1-C11	27	1	15400-PFB-004	1-C11	27
11340-ZW9-000	1-C11	27	2	15422-ZW9-000	1-C14	3C
11342-ZW9-000	1-C11	27	3	15473-881-000	1-C14	3C
11381-ZW9-003	1-C12	28	1	15474-ZW9-000	1-C14	3C
				15611-921-000	1-C10	2E
				15655-ZW9-000	1-C11	27
				16000		
12000				16010-ZV4-005	1-D4	3E
12000-ZW9-405ZA	1-C11	27	4	16011-ZV4-005	1-D4	3E
12155-ZV4-A00	1-C13	29	1	16013-ZW9-003	1-D4	3E
12166-ZW9-000	1-C10	26	1	16016-ZW9-003	1-D4	3E
12209-GB4-681	1-C16	32	1	16016-ZW9-721	1-D4	3E
12210-ZW9-405ZA	1-C10	26	2	16023-ZW9-003	1-D4	3E
12216-ZE2-300	1-E8	55	1	16024-ZV4-650	1-D4	3E
	1-E11	58	1	16028-ZV4-650	1-D4	3E

C Reference with "Part name index"

PART NAME INDEX

Part name	Address	Page	Ref.
[A]			
ABSORBER , FUEL	1-E15	62	5
ARMATURE COMP.	1-D11	43	7
ARM COMP. , LINK JOINT	1-G6	85	18
ARM COMP. , SHIFT LINK	1-G6	85	14
ARM COMP. , TILT	1-F15	79	20
ARM , FUEL PUMP ROCKER	1-C16	32	4
ARM , REVERSE LOCK	1-F15	79	18
ARM , SHIFT LINK	1-F11	74	7
ARM , STOPPER	1-D1	33	12
ARM , THROTTLE REMOTE	1-F11	74	6
ARM , VALVE ROCKER	1-C16	32	3
[B]			
BAG , TOOL , 160MM	1-G5	84	10
BAND	1-G6	86	37
BAND B1 , WIRE	1-F6	69	1
BAND , CORD	1-F3	67	18
BAND , TUBE CLIP , 11MM	1-E15	63	20
BAND , TUBE CLIP , 12.5MM	1-E15	63	19

Address No. 1-C10

E-2 CYLINDER HEAD

Block No.

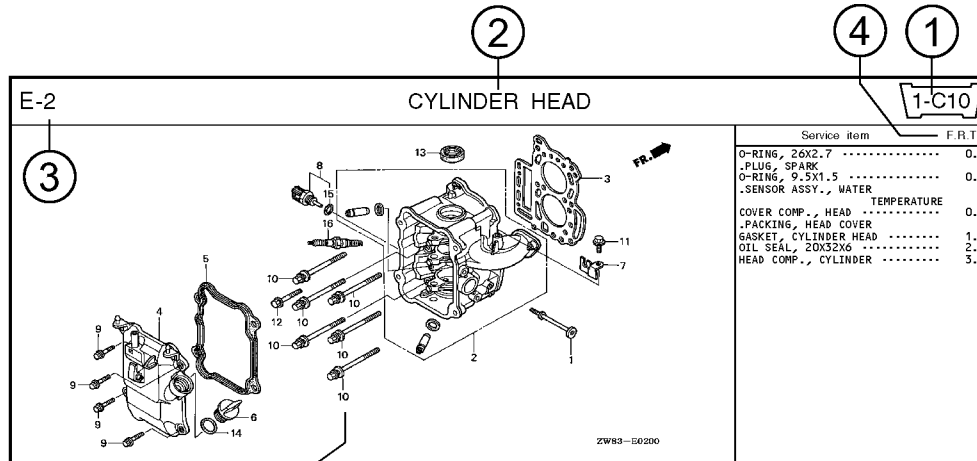
Ref No.

Ref. No.	Part No.	Description	Reqd. QTY						Serial No.	Parts catalogue code
			BF 9901	BFP 9901	BF 1001	BFP 1001	BF 10B1	BFP 10B1		
1	12166-ZW9-000	STOPPER, ENGINE SIDE	2	2	2	2	2	2		
2	12210-ZW9-000ZA	HEAD COMP., CYLINDER	1	1	1	1	1	1		
3	12251-ZW9-003	GASKET, CYLINDER HEAD	1	1	1	1	1	1		
4	12310-ZW9-000	COVER COMP., HEAD	1	1	1	1	1	1		
5	12312-ZW9-000	PACKINGS, HEAD COVER	1	1	1	1	1	1		
6	15611-921-000	CAP, OIL (NO GAUGE)	1	1	1	1	1	1		
7	16617-ZW9-000	HOLDER, CABLE	1	1	1	1	1	1	SC,SG	
	16617-ZW9-010		1	1	1	1	1	1	1001800 LHC,LHD	
			1	1	1	1	1	1	1001801 LHC,LHD	
8	35673-ZW5-003	SENSOR ASSY., WATER	1	1	1	1	1	1		
9	90003-ZW9-000	BOLT, FLANGE, 6X22	4	4	4	4	4	4		
10	90007-ZW9-003	BOLT, FLANGE, 8X83	6	6	6	6	6	6		
11	90011-ZW9-000	BOLT, FLANGE, 6X14(CT200)	1	1	1	1	1	1		
12	90020-ZW9-000	BOLT, FLANGE, 8X40	2	2	2	2	2	2		
13	91002-K19-003	OIL SEAL, 20X32X6	1	1	1	1	1	1		
14	91301-805-000	O-RING, 26X2.7	1	1	1	1	1	1		
15	91307-PK2-005	O-RING, 9.5X1.5(HONDA KIKAKI)	1	1	1	1	1	1		
16	98059-55916	PLUG, SPARK (CR5EH-9)	2	2	2	2	2	2		
	98059-55926	PLUG, SPARK (U16FER9)	2	2	2	2	2	2		

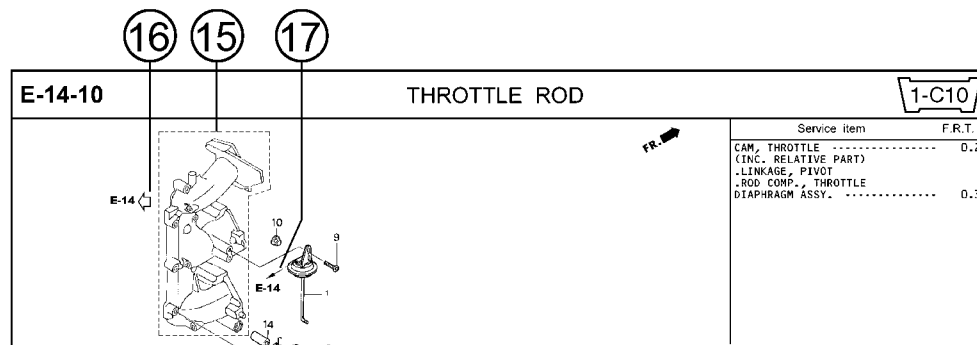
2000.09.20 E

Page No.

Part catalogue structure



Ref. No.	Part No.	Description	Reqd. QTY						Serial No.	Parts catalogue code
			BF 9/9D1	BFP 9/9D1	BF 10D1	BFP 10D1	BF 10B1	BFP 10B1		
1	12166-zw9-000	STOPPER, ENGINE SIDE	2	2	2	2	2			
2	12210-zw9-000ZA	HEAD COMP., CYLINDER *NHS* DARK GRAY	1	1	1	1	1			
3	12251-zw9-003	GASKET, CYLINDER HEAD	1	1	1	1	1			
4	12310-zw9-000	COVER COMP., HEAD	1	1	1	1	1			
5	12312-zw9-000	PACKING, HEAD COVER	1	1	1	1	1			
6	15611-921-000	CAP, OIL (NO GAUGE)	1	1	1	1	1			
7	16617-zw9-000	HOLDER, CABLE	1	1	1	1	1	SC,S6		
	16617-zw9-010		1	1	1	1	1	1001800 LHC,LHD		



① Address number

- Address No. is provided (in place of the page No.) to help you refer to the part with the part No. or part name.

② Block title ③ Block number

④ Service item/Flat rate time

⑤ Reference number

- Title number marked with the parenthesis or parentheses indicates that it continues from the previous page.

⑥ Part number ⑦ Honda color code

⑧ Description

⑨ Assemblies

- Sections framed with broken lines in the exploded view drawings are available as complete assemblies. (Their individual parts can also be obtained.)

⑩ Color description

⑪ Note

- Notes are shown with the parentheses in the part name column.

⑫ Required quantity

- Required QTY shown in the parenthesis or parentheses indicates the optional part.
- Required QTY marked with "N" Indicates the optional part that should be selected as needed.
- Required QTY indicates the number of the part used in the block.

⑬ Serial number

⑭ Type

- When the type column is blank, it indicates that the part is applicable to all types.
- As the type of the actual unit may differ from the "parts catalogue, type" please refer to "Models, types and applicable serial numbers" for confirmation.

⑮

- Parts enclosed within a dotted line are covered in a different block.

⑯

- A hollow arrow indicates the block No. for the parts enclosed within a dotted line .

⑰

- A solid arrow indicates the block No. the part in question is connected to.

When the parts were revised

Abbreviations used in the parts catalogue

1



Be sure to check the serial number!!



Ref. No.	Part No.	Description	Reqd. QTY						Serial No.
			BF 99D1	BFP 9.9D1	BF 10D1	BFP 10D1	BF 10B1	BFP 10B1	
1	12166-ZW9-000	STOPPER, ENGINE SIDE	2	2	2	2	2	2	
2	12210-ZW9-000ZA	HEAD COMP., CYLINDER *NH8*	1	1	1	1	1	1	
3	12251-ZW9-003	GASKET, CYLINDER HEAD	1	1	1	1	1	1	
4	12310-ZW9-000	COVER COMP., HEAD	1	1	1	1	1	1	
5	12312-ZW9-000	PACKING, HEAD COVER	1	1	1	1	1	1	
6	15611-921-000	CAP, OIL (NO GAUGE)	1	1	1	1	1	1	
7	16617-ZW9-000	HOLDER, CABLE (###)	1	1	1	1	1	1	SC, SG LHC, LHD 1001800
	16617-ZW9-010	1	1	1	1	1	1	

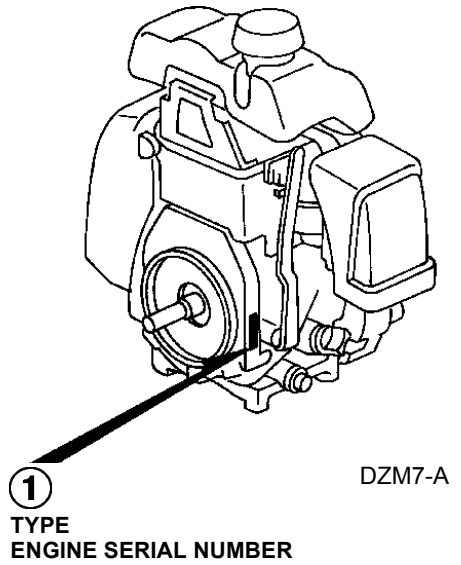
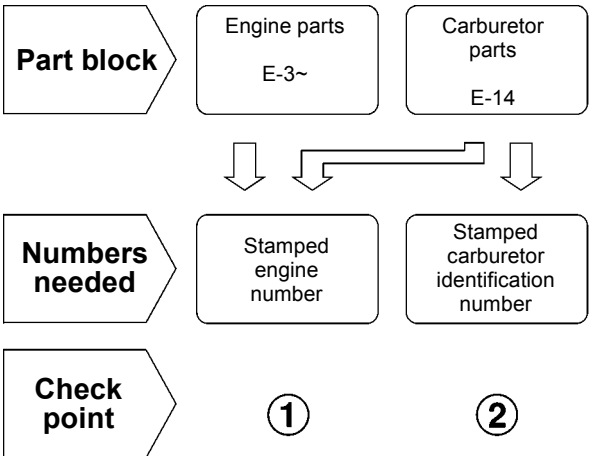
The number has been used from the initial model without revision. When shown at the left side, it is applicable to the models of No.1001801 and the subsequent numbers. When shown at the right side, it is applicable to the models up to No.1001800.

• The parts listed with "###" at the end of the parts name have limited supply period (parts not for sale).

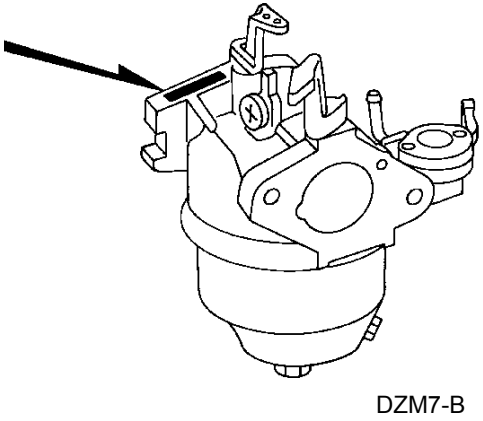
• The following abbreviations are used in the parts name column.

- | | |
|--|-----------------------------|
| A Ampere | FR.Front |
| A.C. Alternating current | IN.Inlet |
| ASSY. Assembly | L (100L) .Link (100 Links) |
| AT. Automatic transmission | L.Left |
| C.D.I. Capacitive discharge ignition | MMMillimeter |
| COMP. ... Complete | MT.Manual Transmission |
| D.C. Direct current | P.T.O.Power take off |
| EX. Exhaust | R.Right |
| G.F.C.I ... Ground fault circuit interruptor | RR.Rear |
| HEX. Hexagonal | STD.Standard |
| H.S.T. Hydrostatic transmission | T (22T) ...Tooth (22 Teeth) |
| | V Volt |
| | WWatt |

How to check the part block and serial numbers



2 CARBURETOR IDENTIFICATION NUMBER



Models, parts catalogue codes and applicable serial numbers

- Models, parts catalogue codes and applicable serial Nos. given in this parts catalogue can be identified as follows.

Model	Type	Parts catalogue type	Applicable engine serial No.	Applicable carburetor identification No.	Model	Type	Parts catalogue type	Applicable engine serial No.	Applicable carburetor identification No.
GXH50	QC	QC	GCAL-1000001~1299999	BF32E A / C	GXH50	QXA	QXA	GCAL-1000001~1299999	BF32E A / C
		QC/A	GCAL-1300001~1499999	BF32E C			QXA/A	GCAL-1300001~1499999	BF32E C
		QC/B	GCAL-1500001~				QXA/B	GCAL-1500001~	
	QEB2	QEB2	GCAL-1300001~1499999	BF32G A	SD	SD	GCAL-1000001~1299999	BF32D A BF32E A / C	
		QEB2/A	GCAL-1500001~			SD/A	GCAL-1300001~1499999	BF32E C	
	QEB4	QEB4	GCAL-1300001~1499999			QHA	SE		SE
		QEB4/A	GCAL-1500001~		SE/A			GCAL-1300001~1499999	BF32C B
	QHA	QHA	GCAL-1000001~1299999		BF32E C			SE/B	
		QHA/A	GCAL-1300001~1499999			SJ	SJ	GCAL-1000001~1299999	BF32D A BF32E A / C
		QHA/B	GCAL-1500001~	SJ/A			GCAL-1300001~1499999	BF32E C	
	QHE	QHE	GCAL-1000001~1299999	SJK	SJ/B		GCAL-1500001~		
		QHE/A	GCAL-1300001~1499999		SJK	GCAL-1000001~1299999	BF32C B		
		QHE/B	GCAL-1500001~		SJK/A	GCAL-1300001~1499999			
	QHM	QHM	GCAL-1300001~1499999	QU	SJK/B	GCAL-1500001~			
		QHM/A	GCAL-1500001~		SPB	SPB	GCAL-1000001~1299999	BF32C B	
	QU	QU	GCAL-1000001~1299999			BF32D A BF32E A / C	SPB/A		GCAL-1300001~1499999
		QU/A	GCAL-1300001~1499999	BF32E C		SPB/B	GCAL-1500001~		
		QU/B	GCAL-1500001~						

Model	Type	Parts catalogue type	Applicable engine serial No.	Applicable carburetor identification No.
GXH50	SPB4	SPB4	GCAL-1300001~1499999	BF32C B
		SPB4/A	GCAL-1500001~	
	SXA	SXA	GCAL-1000001~1299999	BF32C A / B
		SXA/A	GCAL-1300001~1499999	BF32C B
		SXA/B	GCAL-1500001~	

* Of carburetor identification numbers, only the portions underlined in the example below are used for registration.

BF 32E A KC †

Features of each type

• See the following table for the features of each type.

Model Type		GXH50														
		QC	QEB2	QEB4	QHA	QHE	QHM	QU	QXA	SD	SE	SJ	SJK	SPB	SPB4	SXA
Crankshaft	15mm Ø Straight									●	●	●	●	●	●	●
	15.8mm Ø Straight	●	●	●	●	●	●	●	●							
Fuel tank		●	●	●				●	●	●	●	●	●	●	●	●
Engine stop switch		●	●	●				●	●	●	●	●	●			●
Oil alert									●							●

Fuel hose, general purpose hoses and vinyl hose

- The standard part fuel hose, general purpose hose and vinyl hose may be substituted by the coiled bulk part.
- When ordering the standard part fuel hose, general purpose hose and vinyl hose use the bulk part number written in the parts catalog in brackets () underneath the part name.
- When exchanging the hose, cut and use at the specified length as mentioned in the part name.
(For the method of cutting the bulk part, and method of filling out orders etc., please refer to the instructions issued with the bulk part.)

Bulk part number of fuel hose, general purpose hose and vinyl hose.

Example: 9 5 0 0 1 - 7 5 0 0 1 - 5 0 M

Bulk part number:
Refers to the bulk part.

Marking code (fuel hose and general purpose hose)

Change code (Vinyl hose)

Indicates number mark or change sequence, however, the code for the bulk part must be strictly 0 (zero).

Types of code:

- | | | | | | |
|-------------|--|----------------|--|--------------|---|
| • Fuel hose | 2: Red outside braid
(3 mm inside dia. only) | • General hose | 1: Ash gray
2: Ash gray
3: Black
5: Black | • Vinyl hose | 1: Clear
2: Black
3: Light red
6: Light red
7: Pale black |
| | 5: Black inside braid | | | | |
| | 3: Red (3 mm inside dia. only) | | | | |
| | 4: Ash gray with red stripe
(3 mm inside dia. only) | | | | |
| | 6: Black | | | | |

Lengths:

- 001: 1 m (standard)
003: 3 m
008: 8 m } Application or specification of some parts is not settled.

I.D code: (fuel hose and general purpose hose)

- | | | | | |
|------------|--------------------|--------------------|-----------------------------|-----------------------------|
| 30: 3.0 mm | 50: 5.0 mm | 70: 7.0 mm | 11: 11 mm | 12: 12 (outside dia. 17) mm |
| 35: 3.5 mm | 55: 5.3 mm, 5.5 mm | 75: 7.3 mm, 7.5 mm | 91: 12 (outside dia. 15) mm | 14: 14 mm |
| 45: 4.5 mm | 65: 6.5 mm | 80: 8.0 mm | 92: 12 (outside dia. 16) mm | 17: 17 mm |

ID./OD. code: (vinyl hose)

- | | | | | |
|-------------------------|--------------------------|---------------------------|---------------------------|---------------------------|
| 01: ID. 2.9, OD. 6.8 mm | 12: ID. 5.0, OD. 7.0 mm | 21: ID. 8.0, OD. 9.0 mm | 37: ID. 11.0, OD. 15.0 mm | 50: ID. 16.0, OD. 19.0 mm |
| 03: ID. 3.0, OD. 6.0 mm | 10: ID. 5.0, OD. 8.0 mm | 23: ID. 8.0, OD. 12.0 mm | 38: ID. 12.0, OD. 13.0 mm | 55: ID. 17.5, OD. 20.5 mm |
| 05: ID. 3.5, OD. 6.5 mm | 11: ID. 5.0, OD. 9.0 mm | 25: ID. 9.0, OD. 11.0 mm | 39: ID. 12.0, OD. 14.0 mm | 60: ID. 22.0, OD. 27.0 mm |
| 07: ID. 4.0, OD. 7.0 mm | 14: ID. 6.0, OD. 9.0 mm | 27: ID. 9.0, OD. 13.0 mm | 40: ID. 12.0, OD. 16.0 mm | |
| 08: ID. 4.5, OD. 6.5 mm | 17: ID. 7.0, OD. 9.0 mm | 33: ID. 10.0, OD. 14.0 mm | 43: ID. 13.0, OD. 15.0 mm | |
| 09: ID. 4.5, OD. 8.0 mm | 19: ID. 7.0, OD. 11.0 mm | 36: ID. 11.0, OD. 13.0 mm | 45: ID. 14.0, OD. 18.0 mm | |

Hose type:

- 1: Fuel hose
3: Vinyl hose
5: General hose

⊙ **CAUTION: It is DANGEROUS to confuse the fuel hose with the general purpose hose or vinyl hose.**

Never use a general purpose hose or vinyl hose in place of a fuel hose or vice versa. Always use the correct bulk part in the parts catalogue, according to the service manual or the instructions issued with the bulk part.

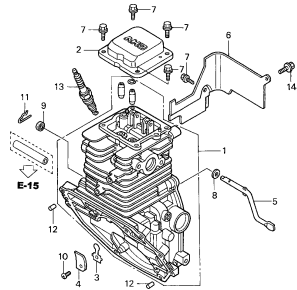
ENGINE GROUP

B10

E-3

CYLINDER BARREL

C 1

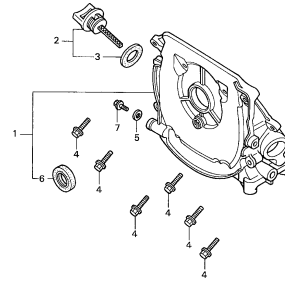


ZM70-E0300A

E-3-10

OIL CASE

C 3

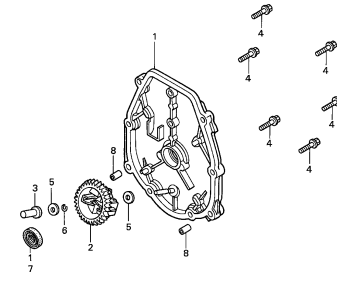


ZM70-E00310

E-6

CRANKCASE COVER

C 4

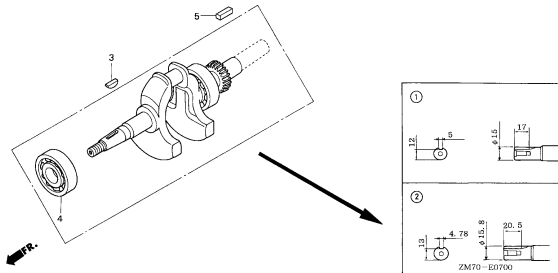


ZM70-E06600

E-7

CRANKSHAFT

C 5

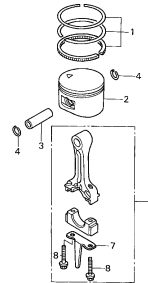


ZM70-E03700

E-8

PISTON/CONNECTING ROD

C 6

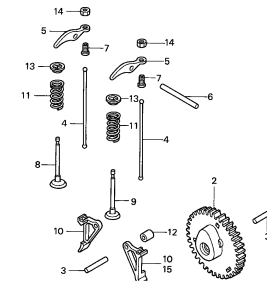


ZM70-E08000

E-9

CAMSHAFT

C 7

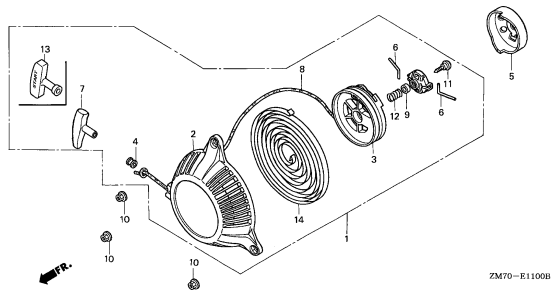


ZM70-E0900A

E-11

RECOIL STARTER

C 9

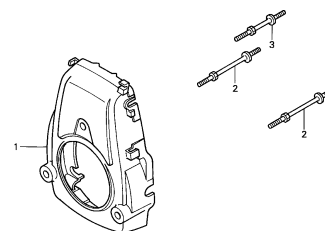


ZM70-E1100B

E-12

FAN COVER

C10

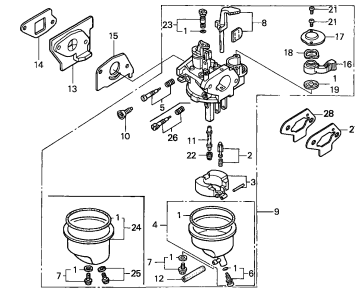


ZM70-E1200

E-14

CARBURETOR

C11



ZM70-E1400A

2

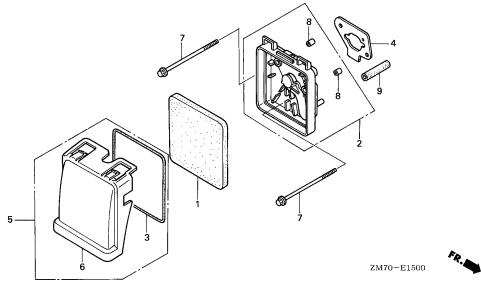
ENGINE GROUP

B11

E-15

AIR CLEANER

C13

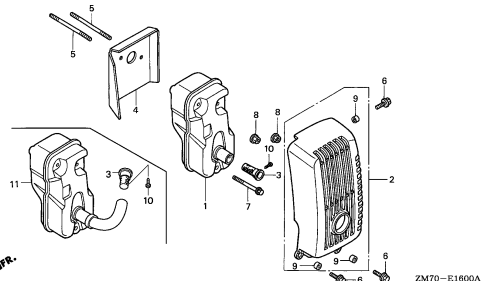


ZM70-E1900

E-16

MUFFLER

C14

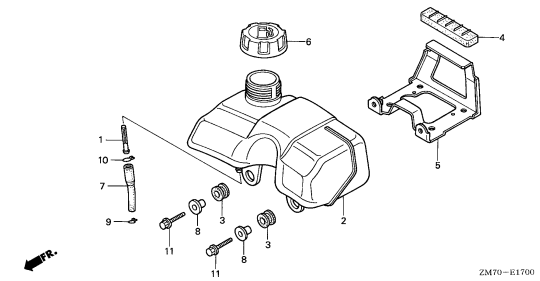


ZM70-E1600A

E-17

FUEL TANK

C16

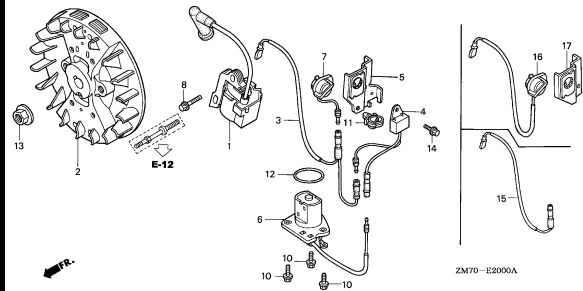


ZM70-E1700

E-20

FLYWHEEL/IGNITION COIL

D 2

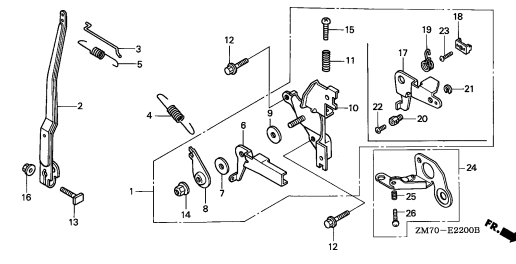


ZM70-E2000A

E-22

CONTROL

D 3

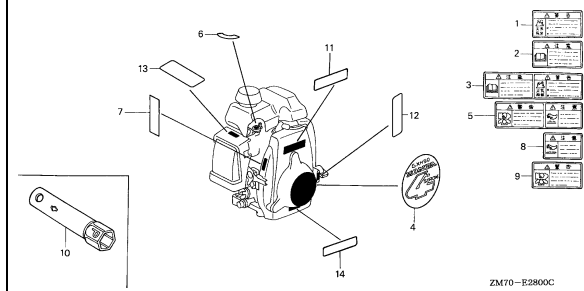


ZM70-E2200B

E-28

LABELS

D 5

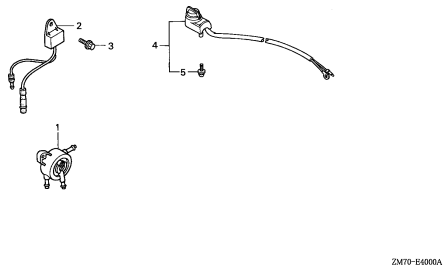


ZM70-E2800C

E-40

OTHER PARTS

D 7



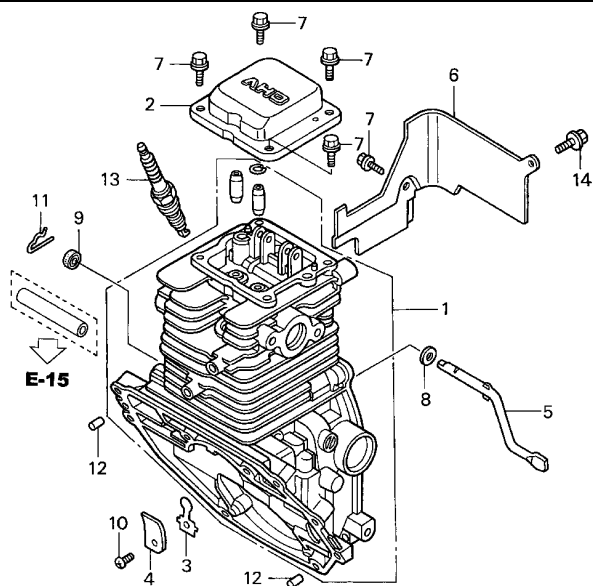
ZM70-B4000A

2

E-3

CYLINDER BARREL

C 1



ZM70-E0300A

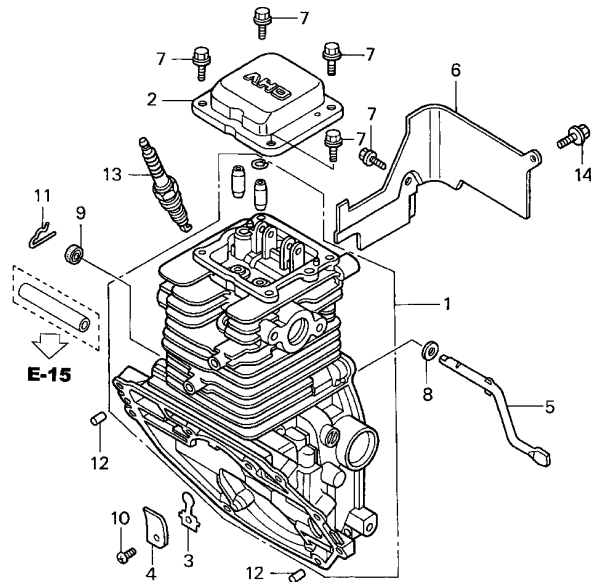
Service item

F.R.T.



2

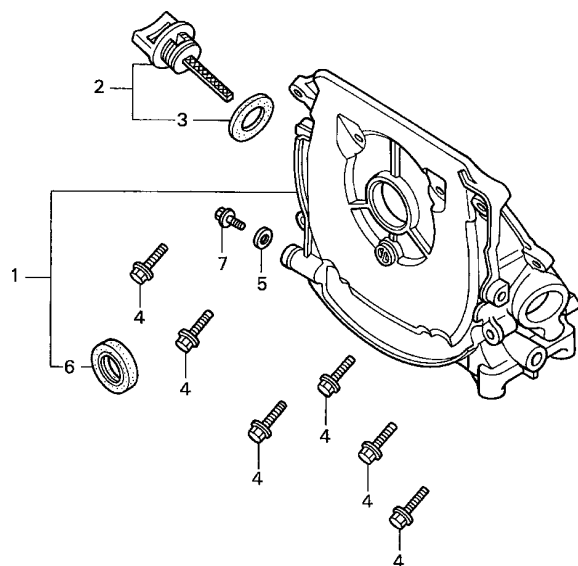
Ref. No.	Part No.	Description	Reqd. QTY	Serial No.	Parts catalogue code
			GXH 50		
1	12100-ZM7-000	BARREL COMP., CYLINDER	1	-----	QC, QHA, QHE, QU, QXA, SD, SE, SJ, SJK, SPB, SXA
	12100-ZM7-407	1	1374067	QC/A, QHA/A, QHE/A, QHM, QU/A, QXA/A, SD/A, SE/A, SJ/A, SJK/A, SPB/A, SPB4, SXA/A
	12100-ZM7-417	1	-----	QC/B, QEB2, QEB2/A, QEB4, QEB4/A, QHA/B, QHE/B, QHM/A, QU/B, QXA/B, SD/B, SE/B, SJ/B, SJK/B, SPB/B, SPB4/A, SXA/B
2	12311-ZM7-000	COVER, HEAD	1	1374068	QC/A, QHA/A, QHE/A, QHM, QU/A, QXA/A, SD/A, SE/A, SJ/A, SJK/A, SPB/A, SPB4, SXA/A
	12311-ZM7-010	1	-----	QC, QHA, QHE, QU, QXA, SD, SE, SJ, SJK, SPB, SXA QC/A, QC/B, QEB2, QEB2/A, QEB4, QEB4/A, QHA/A, QHA/B, QHE/A, QHE/B, QHM, QHM/A, QU/A, QU/B, QXA/A, QXA/B, SD/A, SD/B, SE/A, SE/B, SJ/A, SJ/B, SJK/A, SJK/B, SPB/A, SPB/B, SPB4, SPB4/A, SXA/A, SXA/B
3	15571-ZM7-003	VALVE, OIL OUTLET	1		
4	15572-ZM7-000	PLATE, STOPPER	1		
5	16541-ZM7-000	SHAFT, GOVERNOR ARM	1		
6	19631-ZM7-000	SHROUD	1		
7	90003-892-000	BOLT, FLANGE, 5X12	5		
8	90443-ZC3-000	WASHER, 5.2X9	1		
9	91231-ZC3-003	OIL SEAL, 5X11X5	1		
10	93500-03005-0A	SCREW, PAN, 3X5	1		
11	94251-06000	PIN, LOCK, 6MM	1		
12	96220-60150	ROLLER, 6X15	2		
13	98056-54750	PLUG, SPARK (U14FS-UB) (DENSO)	(1)	-----	SD, SD/A, SD/B, SJ, SJ/A, SJ/B, SJK, SJK/A, SJK/B
	98056-54757	PLUG, SPARK (U14FSR-UB)	(1)	-----	QEB2, QEB2/A, QEB4, QEB4/A
			(1)	-----	QC, QC/A, QC/B, QHA, QHA/A, QHA/B, QHE, QHE/A, QHE/B, QHM, QHM/A, QU, QU/A, QU/B, QXA, QXA/A, QXA/B, SD, SD/A, SD/B, SE, SE/A, SE/B, SPB, SPB/A, SPB/B, SPB4, SPB4/A, SXA, SXA/A, SXA/B
	98056-54770	PLUG, SPARK (C4HSB) (NGK)	(1)	-----	SD, SD/A, SD/B, SJ, SJ/A, SJ/B, SJK, SJK/A, SJK/B



ZM70-E0300A

Ref. No.	Part No.	Description	Reqd. QTY		Serial No.	Parts catalogue code
				GXH 50		
13)	98056-54777	PLUG, SPARK (CR4HSB)	1	(1)	-----	QEB2,QEB2/A,QEB4,QEB4/A QC,QC/A,QC/B,QHA,QHA/A,QHA/B,QHE,QHE/A,QHE/B,QHM,QHM/A,QU,QU/A,QU/B,QXA QXA/A,QXA/B,SD,SD/A,SD/B,SE,SE/A,SE/B,SPB,SPB/A,SPB/B,SPB4,SPB4/A,SXA SXA/A,SXA/B
	98056-55750	PLUG, SPARK (U16FS-UB)	1		-----	SD,SD/A,SD/B,SJ,SJ/A,SJ/B,SJK,SJK/A,SJK/B
	98056-55757	PLUG, SPARK (U16FSR-UB)	1		-----	QC,QC/A,QC/B,QHA,QHA/A,QHA/B,QHE,QHE/A,QHE/B,QHM,QHM/A,QU,QU/A,QU/B,QXA QXA/A,QXA/B,SE,SE/A,SE/B,SPB,SPB/A,SPB/B,SPB4,SPB4/A,SXA,SXA/A,SXA/B
	98056-55770	PLUG, SPARK (C5HSB)	1		-----	SD,SD/A,SD/B,SJ,SJ/A,SJ/B,SJK,SJK/A,SJK/B
	98056-55777	PLUG, SPARK (CR5HSB)	1		-----	QC,QC/A,QC/B,QHA,QHA/A,QHA/B,QHE,QHE/A,QHE/B,QHM,QHM/A,QU,QU/A,QU/B,QXA QXA/A,QXA/B,SE,SE/A,SE/B,SPB,SPB/A,SPB/B,SPB4,SPB4/A,SXA,SXA/A,SXA/B
14	90003-892-000	BOLT, FLANGE, 5X12	1			



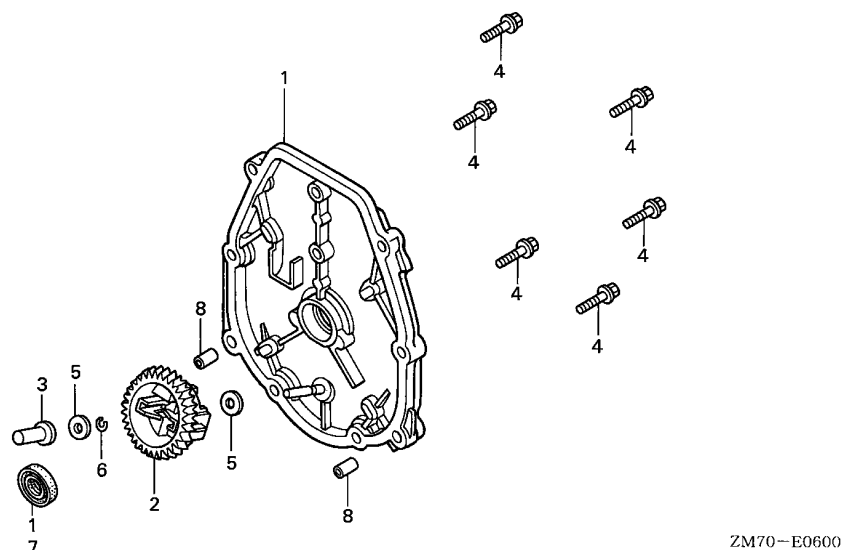


ZM70-E0310

Service item

F.R.T.

Ref. No.	Part No.	Description	Reqd. QTY		Serial No.	Parts catalogue code
				GXH 50		
1	11300-ZM7-000	CASE ASSY., OIL	1	-----	QC, QEB2, QEB4, QU, SD, SE, SJ, SJK, SPB	
	11300-ZM7-800	1	-----	QHA, QHE, QXA, SXA	
	11300-ZM7-406	1	-----	QC/A, QC/B, QEB2/A, QEB4/A, QU/A, QU/B, SD/A, SD/B, SE/A, SE/B, SJ/A, SJ/B, SJK/A, SJK/B, SPB/A, SPB/B, SPB4, SPB4/A	
	11300-ZM7-407	1	-----	QHA/A, QHA/B, QHE/A, QHE/B, QHM, QHM/A, QXA/A, QXA/B, SXA/A, SXA/B	
2	15600-ZM7-003	CAP ASSY., OIL FILLER	1	-----		
3	15625-ZE1-003	PACKING, OIL FILLER CAP	1	-----		
4	90006-ZM7-000	BOLT, FLANGE, 5X23	8	-----		
5	90471-580-000	PACKING, 8MM	1	-----		
6	91202-HC5-003	OIL SEAL, 17X27X5 (ARAI)	1	-----		
7	95701-08012-08	BOLT, FLANGE, 8X12	1	-----		

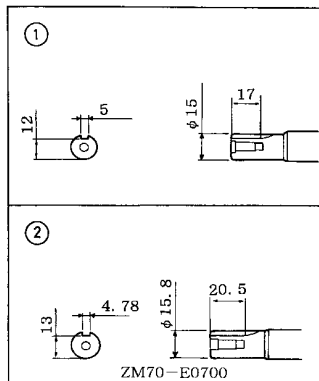
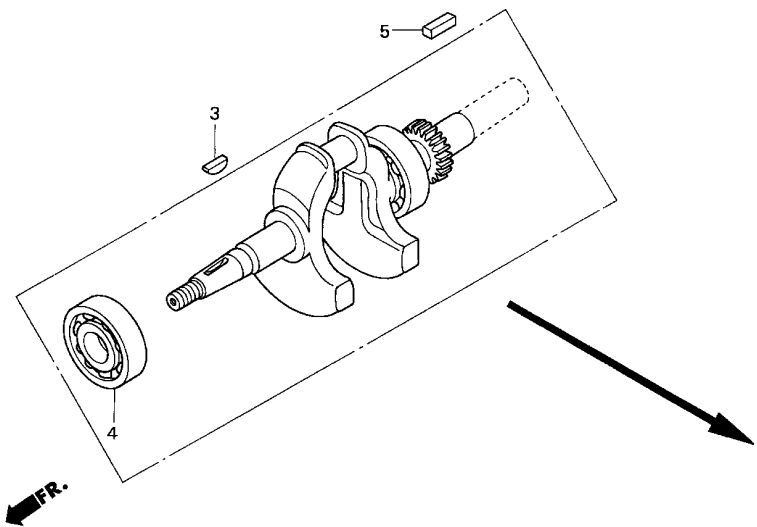


Service item F.R.T.

ZM70-E0600

Ref. No.	Part No.	Description	Reqd. QTY	Serial No.	Parts catalogue code
			GXH 50		
1	11340-ZM7-010	COVER COMP., CRANKCASE SIDE	1	----- 1199157	SD,SE,SJ,SPB,SXA
	11340-ZM7-020	1	-----	SD/A,SD/B,SE/A,SE/B,SJ/A,SJ/B,SJK,SJK/A,SJK/B,SPB/A,SPB/B,SPB4,SPB4/A
				1199158	SXA/A,SXA/B
	11340-ZM7-801	1	-----	SD,SE,SJ,SPB,SXA
	11340-ZM7-802	1	----- 1199157	QC,QHA,QHE,QU,QXA
			1	-----	QC/A,QC/B,QHA/A,QHA/B,QHE/A,QHE/B,QHM,QHM/A,QU/A,QU/B,QXA/A,QXA/B
	11340-ZM7-V30	1	----- 1199158	QC,QHA,QHE,QU,QXA
			1	-----	QEB2,QEB2/A,QEB4,QEB4/A
2	16510-ZM7-000	GOVERNOR ASSY.	1		
3	16531-ZM7-000	SLIDER, GOVERNOR	1		
4	90006-ZM7-000	BOLT, FLANGE, 5X23	6		
5	90441-ZM7-000	WASHER, 4.2X13	2		
6	90602-ZM7-000	CLIP, GOVERNOR HOLDER	1		
7	91202-HC5-003	OIL SEAL, 17X27X5 (ARAI)	1		
8	94301-06100	DOWEL PIN, 6X10	2		





Service item

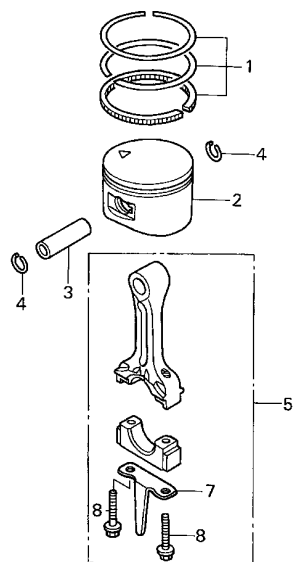
F.R.T.

Ref. No.	Part No.	Description	Reqd. QTY	Serial No.	Parts catalogue code
			GXH 50		
1	13310-ZM7-000	CRANKSHAFT COMP.	1	-----	SD,SD/A,SD/B,SE,SE/A,SE/B,SJ,SJ/A,SJ/B,SJK,SJK/A,SJK/B,SPB,SPB/A,SPB/B SPB4,SPB4/A,SXA,SXA/A,SXA/B
2	13310-ZM7-800	CRANKSHAFT COMP.	1	-----	QC,QC/A,QC/B,QHA,QHA/A,QHA/B,QHE,QHE/A,QHE/B,QHM,QHM/A,QU,QU/A,QU/B,QXA QXA/A,QXA/B
	13310-ZM7-V30	1	-----	QEB2,QEB2/A,QEB4,QEB4/A
3	13331-ZM7-000	KEY, SPECIAL	1	-----	
4	96100-62030-00	BEARING, RADIAL BALL, 6203 ..	1	-----	
5	90741-ZM7-000	KEY, 4.78MM	(1)	-----	QC,QC/A,QC/B,QEB2,QEB4,QHA,QHA/A,QHA/B,QHE,QHE/A,QHE/B,QHM,QHM/A,QU,QU/A QU/B,QXA,QXA/A,QXA/B
	90741-959-000	KEY, 5MM	(1)	-----	QEB2/A,QEB4/A,SD,SD/A,SD/B,SE,SE/A,SE/B,SJ,SJ/A,SJ/B,SJK,SJK/A,SJK/B,SPB SPB/A,SPB/B,SPB4,SPB4/A,SXA,SXA/A,SXA/B

E-8

PISTON/CONNECTING ROD

C 6



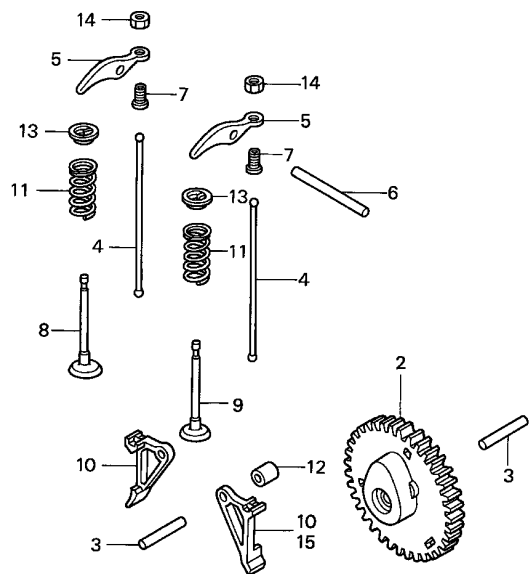
ZM70-E0800

Service item

F.R.T.

Ref. No.	Part No.	Description	Reqd. QTY	Serial No.	Parts catalogue code
			GXH 50		
1	13010-ZM7-000	RING SET, PISTON (STD.)	1		
2	13101-ZM7-000	PISTON (STD.)	1	1209631	QC,QHA,QHE,QU,QXA,SD,SE,SJ,SPB,SXA
	13101-ZM7-010		1		QC/A,QC/B,QEB2,QEB2/A,QEB4,QEB4/A,QHA/A,QHA/B,QHE/A,QHE/B,QHM,QHM/A,QU/A,QU/B,QXA/A,QXA/B,SD/A,SD/B,SE/A,SE/B,SJ/A,SJ/B,SJK,SJK/A,SJK/B,SPB/A,SPB/B,SPB4,SPB4/A,SXA/A,SXA/B
3	13111-122-000	PIN, PISTON, 10X33	1	1209632	QC,QHA,QHE,QU,QXA,SD,SE,SJ,SPB,SXA
4	13115-147-000	CLIP, PISTON PIN, 10MM	2		
5	13200-ZM7-000	ROD ASSY., CONNECTING	1		QC,QC/A,QC/B,QHA,QHA/A,QHA/B,QHE,QHE/A,QHE/B,QHM,QHM/A,QU,QU/A,QU/B,QXA/QXA/A,QXA/B,SD,SD/A,SD/B,SE,SE/A,SE/B,SJ,SJ/A,SJ/B,SJK,SJK/A,SJK/B,SPB/SPB/A,SPB/B,SPB4,SPB4/A,SXA,SXA/A,SXA/B
	13200-ZM7-V30		1	1387261	QEB2,QEB4
			1		QEB2/A,QEB4/A
			1	1387262	QEB2,QEB4
7	13281-ZM7-000	DIPPER, CONNECTING ROD	1		QC,QC/A,QC/B,QHA,QHA/A,QHA/B,QHE,QHE/A,QHE/B,QHM,QHM/A,QU,QU/A,QU/B,QXA/QXA/A,QXA/B,SD,SD/A,SD/B,SE,SE/A,SE/B,SJ,SJ/A,SJ/B,SJK,SJK/A,SJK/B,SPB/SPB/A,SPB/B,SPB4,SPB4/A,SXA,SXA/A,SXA/B
	13281-ZM7-V30		1	1387261	QEB2,QEB4
			1		QEB2/A,QEB4/A
			1	1387262	QEB2,QEB4
8	90001-ZM7-000	BOLT, CONNECTING ROD	2		

2

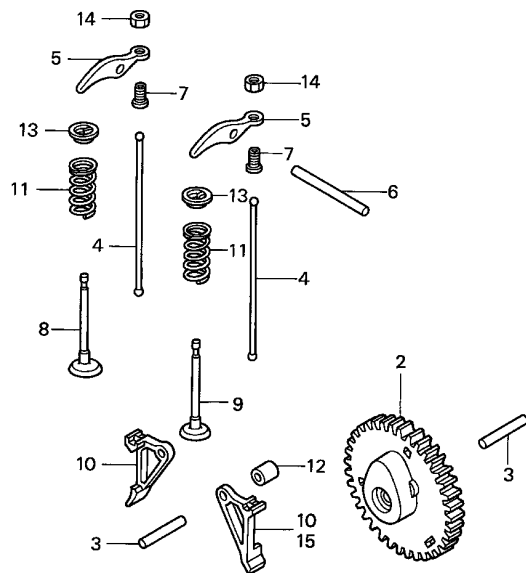


ZM70-E0900A

Service item

F.R.T.

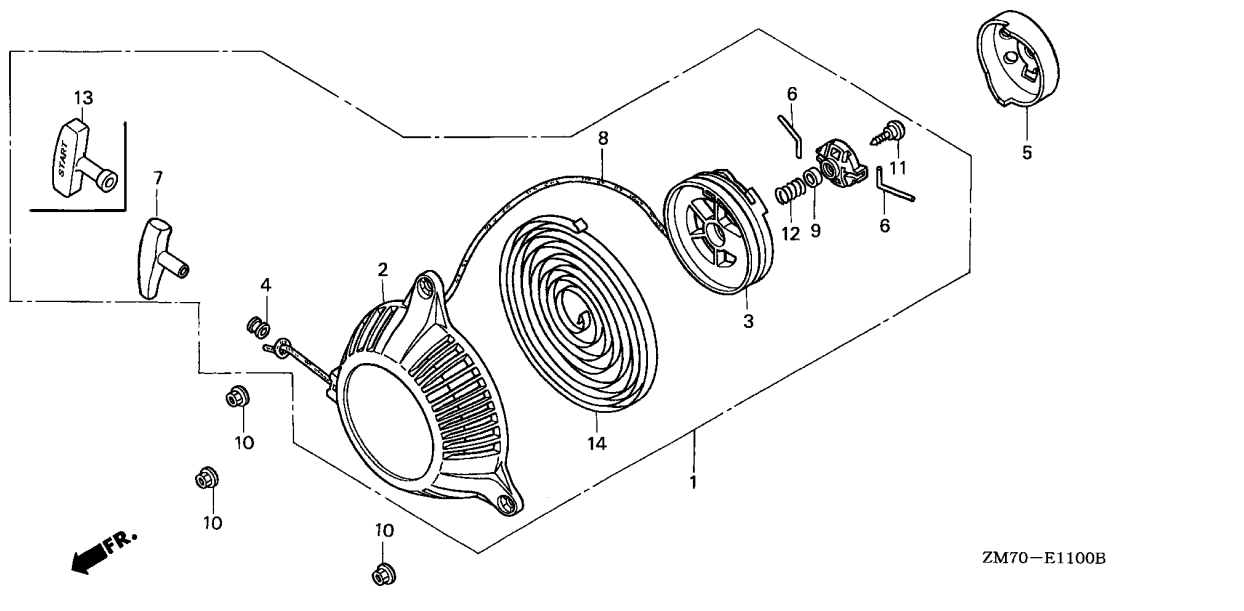
Ref. No.	Part No.	Description	Reqd. QTY	Serial No.	Parts catalogue code
			GXH 50		
2	14100-ZM7-000	CAMSHAFT ASSY.	1	----- 1023740	QC,QU,QXA,SD,SE,SJ,SXA
	14100-ZM7-010	1	-----	QC/A,QC/B,QHA,QHA/A,QHA/B,QHE,QHE/A,QHE/B,QHM,QHM/A,QU/A,QU/B,QXA/A,QXA/B,SD/A,SD/B,SE/A,SE/B,SJ/A,SJ/B,SJK,SJK/A,SJK/B,SPB,SPB/A,SPB/B,SPB4,SPB4/A,SXA/A,SXA/B
	14100-Z0G-000	1	1023741	----- QC,QU,QXA,SD,SE,SJ,SXA
3	90702-P6R-008	PIN, OIL PUMP	2	----- 1199157	QC,QHA,QHE,QU,QXA,SD,SE,SJ,SPB,SXA
	14126-Z0G-003	ROLLER (5X29.8)	2	-----	QC/A,QC/B,QEB2,QEB2/A,QEB4,QEB4/A,QHA/A,QHA/B,QHE/A,QHE/B,QHM,QHM/A,QU/A,QU/B,QXA/A,QXA/B,SD/A,SD/B,SE/A,SE/B,SJ/A,SJ/B,SJK,SJK/A,SJK/B,SPB/A,SPB/B,SPB4,SPB4/A,SXA/A,SXA/B
			2	1199158	----- QC,QHA,QHE,QU,QXA,SD,SE,SJ,SPB,SXA
4	14410-ZM7-000	ROD, PUSH	2		
5	14431-ZM7-000	ARM, VALVE ROCKER	2		
6	14435-ZM7-003	ROLLER (4X37.8)	1		
7	14451-ZM7-000	PIVOT, ROCKER ARM	2		
8	14711-ZM7-000	VALVE, IN.	1		
9	14721-ZM7-000	VALVE, EX.	1		
10	14731-ZM7-003	LIFTER, VALVE	2	----- 1029411	QC,QU,QXA,SD,SE,SJ,SXA
	14731-ZM7-013	1	-----	QEB2,QEB2/A,QEB4,QEB4/A
			2	-----	QC/A,QC/B,QHA,QHA/A,QHA/B,QHE,QHE/A,QHE/B,QHM,QHM/A,QU/A,QU/B,QXA/A,QXA/B,SD/A,SD/B,SE/A,SE/B,SJ/A,SJ/B,SJK,SJK/A,SJK/B,SPB,SPB/A,SPB/B,SPB4,SPB4/A,SXA/A,SXA/B
			2	1029412	----- QC,QU,QXA,SD,SE,SJ,SXA
11	14751-ZM7-000	SPRING, VALVE	2		
12	14754-ZM7-000	COLLAR, LIFTER	1		
13	14771-ZM3-000	RETAINER, VALVE SPRING	2	----- 1017842	QC,QU,QXA,SD,SE,SJ,SXA



ZM70-E0900A

2

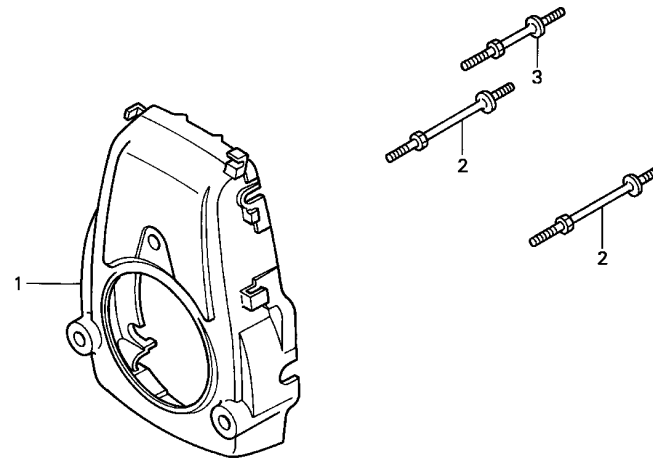
Ref. No.	Part No.	Description	Reqd. QTY	Serial No.	Parts catalogue code
			GXH 50		
13)	14771-ZM3-010	RETAINER, VALVE SPRING	2	-----	QC/A, QC/B, QEB2, QEB2/A, QEB4, QEB4/A, QHA, QHA/A, QHA/B, QHE, QHE/A, QHE/B, QHM, QHM/A, QU/A, QU/B, QXA/A, QXA/B, SD/A, SD/B, SE/A, SE/B, SJ/A, SJ/B, SJK, SJK/A, SJK/B, SPB, SPB/A, SPB/B, SPB4, SPB4/A, SXA/A, SXA/B
14	90206-KM3-000	NUT, TAPPET ADJUSTING	2	1017843	QC, QU, QXA, SD, SE, SJ, SXA
15	14732-Z0G-003	LIFTER, EX. VALVE	1	-----	QEB2, QEB2/A, QEB4, QEB4/A



ZM70-E1100B

Service item	F.R.T.

Ref. No.	Part No.	Description	Reqd. QTY	Serial No.	Parts catalogue code
1	28400-ZM7-003	STARTER ASSY., RECOIL	1	-----	QC, QC/A, QC/B, QHA, QHA/A, QHA/B, QHE, QHE/A, QHE/B, QHM, QHM/A, QU, QU/A, QU/B, QXA, QXA/A, QXA/B, SD, SD/A, SD/B, SE, SE/A, SE/B, SJ, SJ/A, SJ/B, SJK, SJK/A, SJK/B, SPB, SPB/A, SPB/B, SPB4, SPB4/A, SXA, SXA/A, SXA/B
2	28400-ZM7-V31	1	-----	QEB2, QEB2/A, QEB4, QEB4/A
2	28414-ZM7-003	CASE, RECOIL STARTER	1	-----	QC, QC/A, QC/B, QHA, QHA/A, QHA/B, QHE, QHE/A, QHE/B, QHM, QHM/A, QU, QU/A, QU/B, QXA, QXA/A, QXA/B, SD, SD/A, SD/B, SE, SE/A, SE/B, SJ, SJ/A, SJ/B, SJK, SJK/A, SJK/B, SPB, SPB/A, SPB/B, SPB4, SPB4/A, SXA, SXA/A, SXA/B
3	28410-ZM7-V31	CASE COMP., STARTER	1	-----	QEB2, QEB2/A, QEB4, QEB4/A
3	28421-ZM7-003	REEL, RECOIL STARTER	1	-----	
4	28433-ZM3-003	GUIDE, ROPE	1	-----	QC, QC/A, QC/B, QHA, QHA/A, QHA/B, QHE, QHE/A, QHE/B, QHM, QHM/A, QU, QU/A, QU/B, QXA, QXA/A, QXA/B, SD, SD/A, SD/B, SE, SE/A, SE/B, SJ, SJ/A, SJ/B, SJK, SJK/A, SJK/B, SPB, SPB/A, SPB/B, SPB4, SPB4/A, SXA, SXA/A, SXA/B
5	28451-ZM7-003	PULLEY, RECOIL STARTER	1	-----	
6	28459-ZM7-003	ARM, SWING	2	-----	
7	28461-ZM3-003	KNOB, RECOIL STARTER	1	-----	QC, QC/A, QC/B, QHA, QHA/A, QHA/B, QHE, QHE/A, QHE/B, QHM, QHM/A, QU, QU/A, QU/B, QXA, QXA/A, QXA/B, SD, SD/A, SD/B, SE, SE/A, SE/B, SJ, SJ/A, SJ/B, SJK, SJK/A, SJK/B, SPB, SPB/A, SPB/B, SPB4, SPB4/A, SXA, SXA/A, SXA/B
8	28462-ZM7-003	ROPE, RECOIL STARTER	1	-----	QC, QC/A, QC/B, QHA, QHA/A, QHA/B, QHE, QHE/A, QHE/B, QHM, QHM/A, QU, QU/A, QU/B, QXA, QXA/A, QXA/B, SD, SD/A, SD/B, SE, SE/A, SE/B, SJ, SJ/A, SJ/B, SJK, SJK/A, SJK/B, SPB, SPB/A, SPB/B, SPB4, SPB4/A, SXA, SXA/A, SXA/B
9	28462-Z06-003	1	-----	QEB2, QEB2/A, QEB4, QEB4/A
9	91504-ZM7-003	COLLAR	1	-----	
10	94050-05000	NUT, FLANGE, 5MM	3	-----	
11	90012-ZM3-003	SCREW, SETTING	1	-----	
12	28404-968-004	SPRING, FRICTION	1	-----	
13	28461-ZH8-003	GRIP, STARTER	1	-----	QEB2, QEB2/A, QEB4, QEB4/A
14	28442-ZL8-003	SPRING, RECOIL STARTER	1	-----	



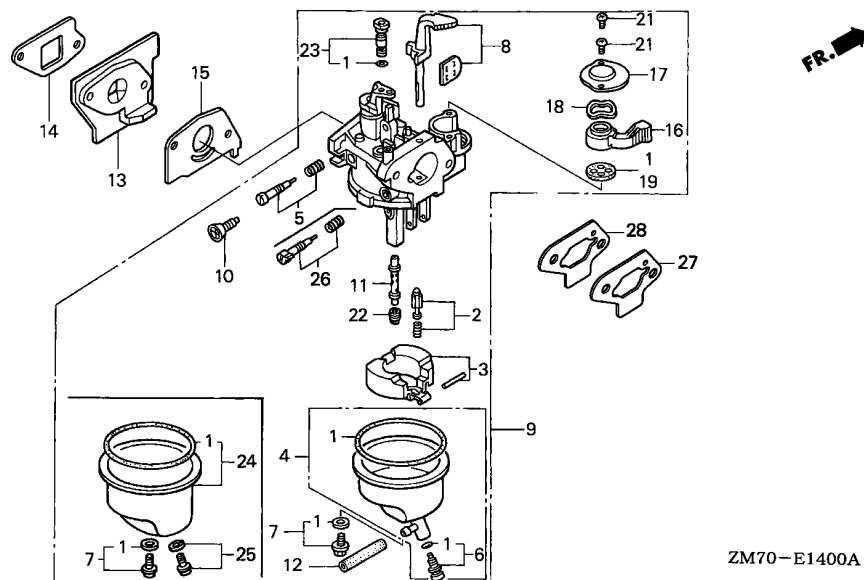
ZM70-E1200

Service item

F.R.T.

Ref. No.	Part No.	Description	Reqd. QTY	Serial No.	Parts catalogue code
			GXH 50		
1	19610-ZM7-000ZA	COVER COMP., FAN	1	-----	QC, QHA, QHE, QU, QXA, SD, SE, SJ, SJK, SPB, SXA
		R8.....BRIGHT RED	1	-----	1344772 QC/A, QHA/A, QHE/A, QU/A, QXA/A, SD/A, SE/A, SJ/A, SJK/A, SPB/A, SXA/A
	19610-ZM7-000ZD	*NH1*.....BLACK	1	-----	SPB4, SPB4/A
	19610-ZM7-000ZC	*R280*.....POWER RED	1	-----	QC/B, QEB2, QEB2/A, QEB4, QEB4/A, QHA/B, QHE/B, QHM, QHM/A, QU/B, QXA/B, SD/B, SE/B
			1	1344773	SJ/B, SJK/B, SPB/B, SPB4, SPB4/A, SXA/B
2	90042-ZM7-000	BOLT, STUD (A)	2		QC/A, QHA/A, QHE/A, QU/A, QXA/A, SD/A, SE/A, SJ/A, SJK/A, SPB/A, SXA/A
3	90043-ZM7-000	BOLT, STUD (B)	1		





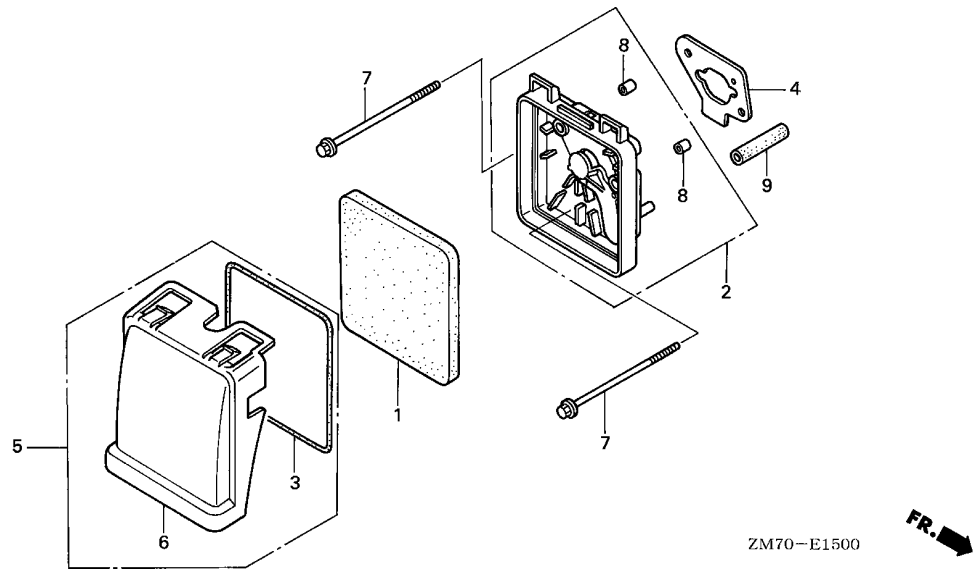
ZM70-E1400A

Service item

F.R.T.

Ref. No.	Part No.	Description	Reqd. QTY	Serial No.	Parts catalogue code
1	16010-ZG0-015	GASKET SET	1	-----	QC, QC/A, QC/B, QHA, QHA/A, QHA/B, QHE, QHE/A, QHE/B, QHM, QHM/A, QU, QU/A, QU/B, QXA
	16010-ZM7-003	1	-----	QXA/A, QXA/B, SD, SD/A, SD/B, SJ, SJ/A, SJ/B, SJK, SJK/A, SJK/B
2	16011-ZE0-005	VALVE SET, FLOAT	1	-----	QEB2, QEB2/A, QEB4, QEB4/A, SE, SE/A, SE/B, SPB, SPB/A, SPB/B, SPB4, SPB4/A, SXA
3	16013-ZG0-811	FLOAT SET	1	-----	SXA/A, SXA/B
4	16015-ZM7-003	CHAMBER SET, FLOAT	1	-----	QEB2, QEB2/A, QEB4, QEB4/A, SE, SE/A, SE/B, SPB, SPB/A, SPB/B, SPB4, SPB4/A, SXA
5	16016-ZE0-005	SCREW SET, PILOT	1	-----	BF32A A SE
		(CARBURETOR NO.)	1	-----	BF32D A QU, SD, SJ
		//			
6	16024-ZB9-005	SCREW SET, DRAIN	1	-----	QEB2, QEB2/A, QEB4, QEB4/A, SE, SE/A, SE/B, SPB, SPB/A, SPB/B, SPB4, SPB4/A, SXA
					SXA/A, SXA/B
7	16028-ZG0-811	SCREW SET	1	-----	
8	16044-ZM7-003	CHOKE SET	1	-----	
9	16100-ZM7-G01	CARBURETOR ASSY. (BF32D A) ..	1	-----	1039488 QU, SD, SJ
	16100-ZM7-G11	CARBURETOR ASSY. (BF32E A) ..	1	-----	1068857 QC, QXA
			1	1039489	1068857 QU, SD, SJ
	16100-ZM7-G13	CARBURETOR ASSY. (BF32E C) ..	1	-----	QC/A, QC/B, QHA, QHA/A, QHA/B, QHE, QHE/A, QHE/B, QHM, QHM/A, QU/A, QU/B, QXA/A, QXA/B
			1	1068858	SD/A, SD/B, SJ/A, SJ/B, SJK, SJK/A, SJK/B
	16100-ZM7-003	CARBURETOR ASSY. (BF32A A) ..	1	-----	QC, QU, QXA, SD, SJ
	16100-ZM7-801	CARBURETOR ASSY. (BF32C A) ..	1	-----	1039300 SE
			1	1068857	SXA
			1	1039301	SE
	16100-ZM7-803	CARBURETOR ASSY. (BF32C B) ..	1	-----	SE/A, SE/B, SPB, SPB/A, SPB/B, SPB4, SPB4/A, SXA/A, SXA/B
			1	1068858	SE, SXA
	16100-ZM7-V31	CARBURETOR ASSY. (BF32G A) ..	1	-----	QEB2, QEB2/A, QEB4, QEB4/A
10	16124-ZE0-005	SCREW, THROTTLE STOP	1	-----	

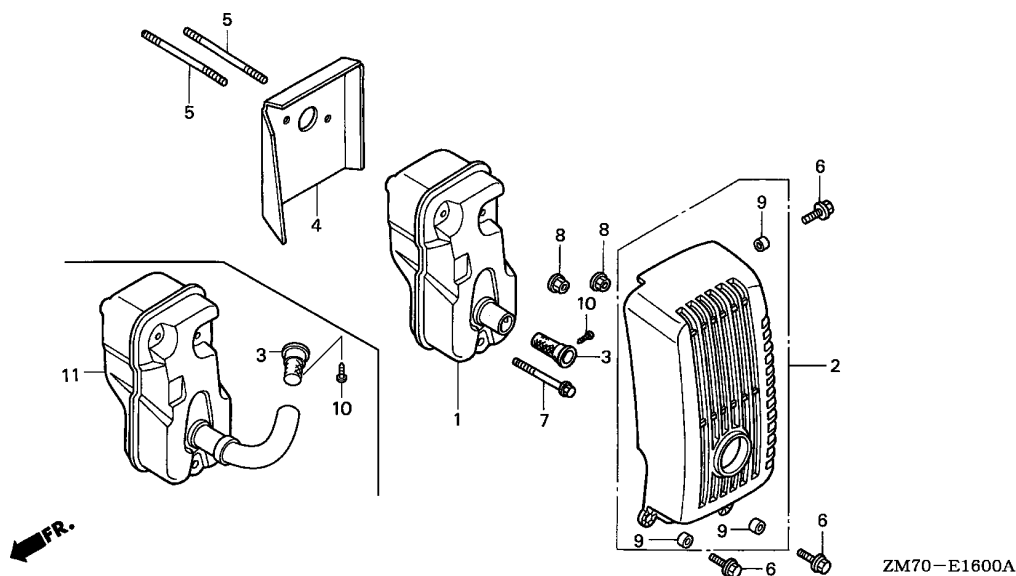
Ref. No.	Part No.	Description	Reqd. QTY		Serial No.	Parts catalogue code
				GXH 50		
11	16166-ZM7-003	NOZZLE, MAIN	1			
12	16199-ZM7-003	TUBE	1	-----	-----	SE,SE/A,SE/B,SPB,SPB/A,SPB/B,SPB4,SPB4/A,SXA,SXA/A,SXA/B
	95003-05010-31	TUBE, VINYL, 3.5X6.5X100 (95003-05001-60M)	1	-----	-----	QEB2,QEB2/A,QEB4,QEB4/A
13	16211-ZM7-000	INSULATOR, CARBURETOR	1			
14	16212-ZM7-000	PACKING, INSULATOR	1			
15	16221-ZG0-801	PACKING, CARBURETOR	1			
16	16953-ZG0-812	LEVER, COCK	1			
17	16954-ZE1-812	PLATE, LEVER SETTING	1			
18	16956-ZE1-811	SPRING, COCK LEVER	1			
19	16957-ZE1-812	PACKING, FUEL COCK	1			
21	93500-03006-1H	SCREW, PAN, 3X6	2			
22	99101-ZG0-0480	JET, MAIN, #48	(1)	-----	-----	QEB2,QEB2/A,QEB4,QEB4/A
	99101-ZG0-0500	JET, MAIN, #50	(1)			
	99101-ZG0-0520	JET, MAIN, #52	1	-----	-----	QC/B,QEB2,QEB2/A,QEB4,QEB4/A,QHA/B,QHE/B,QHM/A,QU/B,QXA/B,SD/B,SE/B,SJ/B SJK/B,SPB/B,SPB4/A,SXA/B
			(1)	-----	-----	QC,QC/A,QHA,QHA/A,QHE,QHE/A,QHM,QU,QU/A,QXA,QXA/A,SD,SD/A,SE,SE/A,SJ,SJ/A SJK,SJK/A,SPB,SPB/A,SPB4,SXA,SXA/A
	99101-ZG0-0550	JET, MAIN, #55	1	-----	-----	QC,QC/A,QC/B,QHA,QHA/A,QHA/B,QHE,QHE/A,QHE/B,QHM,QHM/A,QU,QU/A,QU/B,QXA QXA/A,QXA/B,SD,SD/A,SD/B,SE,SE/A,SE/B,SJ,SJ/A,SJ/B,SJK,SJK/A,SJK/B,SPB SPB/A,SPB/B,SPB4,SPB4/A,SXA,SXA/A,SXA/B
23	99204-ZE2-0350	JET SET, PILOT, #35	1			
24	16015-ZG0-811	CHAMBER SET, FLOAT	1	-----	-----	QC,QC/A,QC/B,QHA,QHA/A,QHA/B,QHE,QHE/A,QHE/B,QHM,QHM/A,QU,QU/A,QU/B,QXA QXA/A,QXA/B,SD,SD/A,SD/B,SJ,SJ/A,SJ/B,SJK,SJK/A,SJK/B
25	16024-ZE1-811	SCREW SET, DRAIN	1	-----	-----	QC,QC/A,QC/B,QHA,QHA/A,QHA/B,QHE,QHE/A,QHE/B,QHM,QHM/A,QU,QU/A,QU/B,QXA QXA/A,QXA/B,SD,SD/A,SD/B,SJ,SJ/A,SJ/B,SJK,SJK/A,SJK/B
26	16016-ZH7-W01	SCREW SET, PILOT	1	-----	-----	QC,QC/A,QC/B,QEB2,QEB2/A,QEB4,QEB4/A,QHA,QHA/A,QHA/B,QHE,QHE/A,QHE/B,QHM QHM/A,QU/A,QU/B,QXA,QXA/A,QXA/B,SD/A,SD/B,SE/A,SE/B,SJ/A,SJ/B,SJK,SJK/A SJK/B,SPB,SPB/A,SPB/B,SPB4,SPB4/A,SXA,SXA/A,SXA/B
		(CARBURETOR NO.)	1	BF32C A	-----	SE
			1	BF32E A	-----	QU,SD,SJ
27	16220-ZM7-V30	SPÁČER, CARBURETOR	1	-----	-----	QEB2,QEB2/A,QEB4,QEB4/A
28	17228-ZM7-000	PACKING, AIR CLEANER	1	-----	-----	QEB2,QEB2/A,QEB4,QEB4/A



Service item

F.R.T.

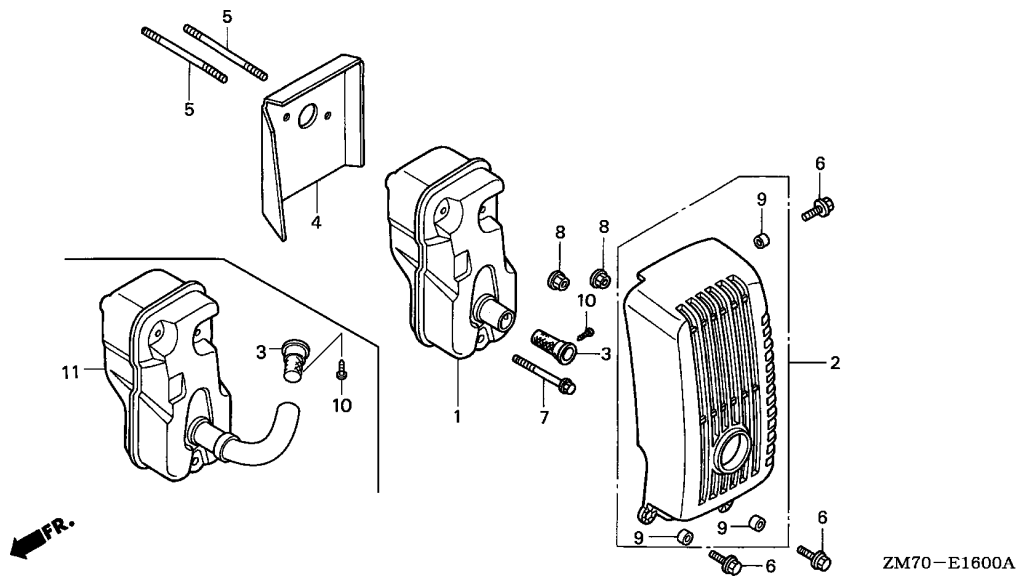
Ref. No.	Part No.	Description	Reqd. QTY		Serial No.	Parts catalogue code
				GXH 50		
1	17211-ZM7-000	ELEMENT, AIR CLEANER	1			
2	17220-ZM7-000	CASE COMP., AIR CLEANER	1			
3	17227-ZM7-000	SEAL, AIR CLEANER	1			
4	17228-ZM7-000	PACKING, AIR CLEANER	1			QC, QC/A, QC/B, QHA, QHA/A, QHA/B, QHE, QHE/A, QHE/B, QHM, QHM/A, QU, QU/A, QU/B, QXA QXA/A, QXA/B, SD, SD/A, SD/B, SE, SE/A, SE/B, SJ, SJ/A, SJ/B, SJK, SJK/A, SJK/B, SPB SPB/A, SPB/B, SPB4, SPB4/A, SXA, SXA/A, SXA/B QEB2, QEB2/A, QEB4, QEB4/A
	17228-Z0G-000	1			
5	17230-ZM7-000	COVER COMP., AIR CLEANER	1			
6	17231-ZM7-000	COVER, AIR CLEANER	1			
7	90004-ZM7-000	BOLT, FLANGE, 5X75	2			QC, QC/A, QC/B, QHA, QHA/A, QHA/B, QHE, QHE/A, QHE/B, QHM, QHM/A, QU, QU/A, QU/B, QXA QXA/A, QXA/B, SD, SD/A, SD/B, SE, SE/A, SE/B, SJ, SJ/A, SJ/B, SJK, SJK/A, SJK/B, SPB SPB/A, SPB/B, SPB4, SPB4/A, SXA, SXA/A, SXA/B QEB2, QEB2/A, QEB4, QEB4/A
	90004-ZM7-V30	BOLT, FLANGE, 5X80	2			
8	91503-ZM7-000	COLLAR, AIR CLEANER	2			
9	95005-70075-30	TUBE, 7X75 (95005-70001-30M)	1			



Service item F.R.T.

Ref. No.	Part No.	Description	Reqd. QTY		Serial No.	Parts catalogue code
				GXH 50		
1	18310-ZM7-003	MUFFLER COMP.	1		-----	QC, QC/A, QC/B, QHA, QHA/A, QHA/B, QHE, QHE/A, QHE/B, QU, QU/A, QU/B, QXA, QXA/A, QXA/B, SD, SD/A, SD/B, SE, SE/A, SE/B, SJ, SJ/A, SJ/B, SJK, SJK/A, SJK/B, SPB, SPB/A, SPB/B, SXA, SXA/A, SXA/B
	18310-ZM7-801	1		-----	QHM, QHM/A, SPB4, SPB4/A
			(1)		-----	QC, QC/A, QC/B, QHA, QHA/A, QHA/B, QHE, QHE/A, QHE/B, QU, QU/A, QU/B, QXA, QXA/A, QXA/B, SD, SD/A, SD/B, SE, SE/A, SE/B, SJ, SJ/A, SJ/B, SJK, SJK/A, SJK/B, SPB, SPB/A, SPB/B, SXA, SXA/A, SXA/B
2	18320-ZM7-000	PROTECTOR COMP., MUFFLER	1		-----	QC, QC/A, QC/B, QEB2, QEB2/A, QEB4, QEB4/A, QU, QU/A, QU/B, QXA, QXA/A, QXA/B, SD, SD/A, SD/B, SE, SE/A, SE/B, SJ, SJ/A, SJ/B, SJK, SJK/A, SJK/B, SPB, SPB/A, SPB/B, SPB4, SPB4/A, SXA, SXA/A, SXA/B
3	18350-ZM7-801	ARRESTER COMP., SPARK	1		-----	QHM, QHM/A, SPB4, SPB4/A
			(1)		-----	QC, QC/A, QC/B, QEB2, QEB2/A, QHA, QHA/A, QHA/B, QHE, QHE/A, QHE/B, QU, QU/A, QU/B, QXA, QXA/A, QXA/B, SD, SD/A, SD/B, SE, SE/A, SE/B, SJ, SJ/A, SJ/B, SJK, SJK/A, SJK/B, SPB, SPB/A, SPB/B, SXA, SXA/A, SXA/B
4	18515-ZM7-000	GUIDE, AIR	1		-----	
5	90002-ZM7-000	BOLT, STUD, 2,5X55	2		-----	
6	90012-892-000	BOLT, FLANGE, 5X16	3		-----	QC, QC/A, QC/B, QEB2, QEB2/A, QEB4, QEB4/A, QU, QU/A, QU/B, QXA, QXA/A, QXA/B, SD, SD/A, SD/B, SE, SE/A, SE/B, SJ, SJ/A, SJ/B, SJK, SJK/A, SJK/B, SPB, SPB/A, SPB/B, SPB4, SPB4/A, SXA, SXA/A, SXA/B
7	90103-P4V-010	BOLT, FLANGE, 5X35	1		-----	
8	90136-SM4-901	NUT, SELF-LOCK, 5MM	2		-----	
9	91502-ZM3-000	COLLAR, TOP COVER	3		-----	QC, QC/A, QC/B, QEB2, QEB2/A, QEB4, QEB4/A, QU, QU/A, QU/B, QXA, QXA/A, QXA/B, SD, SD/A, SD/B, SE, SE/A, SE/B, SJ, SJ/A, SJ/B, SJK, SJK/A, SJK/B, SPB, SPB/A, SPB/B, SPB4, SPB4/A, SXA, SXA/A, SXA/B
10	93903-24110	SCREW, TAPPING, 4X8	1		-----	QHM, QHM/A, SPB4, SPB4/A
			(1)		-----	QC, QC/A, QC/B, QEB2, QEB2/A, QHA, QHA/A, QHA/B, QHE, QHE/A, QHE/B, QU, QU/A, QU/B, QXA, QXA/A, QXA/B, SD, SD/A, SD/B, SE, SE/A, SE/B, SJ, SJ/A, SJ/B, SJK, SJK/A, SJK/B, SPB, SPB/A, SPB/B, SXA, SXA/A, SXA/B

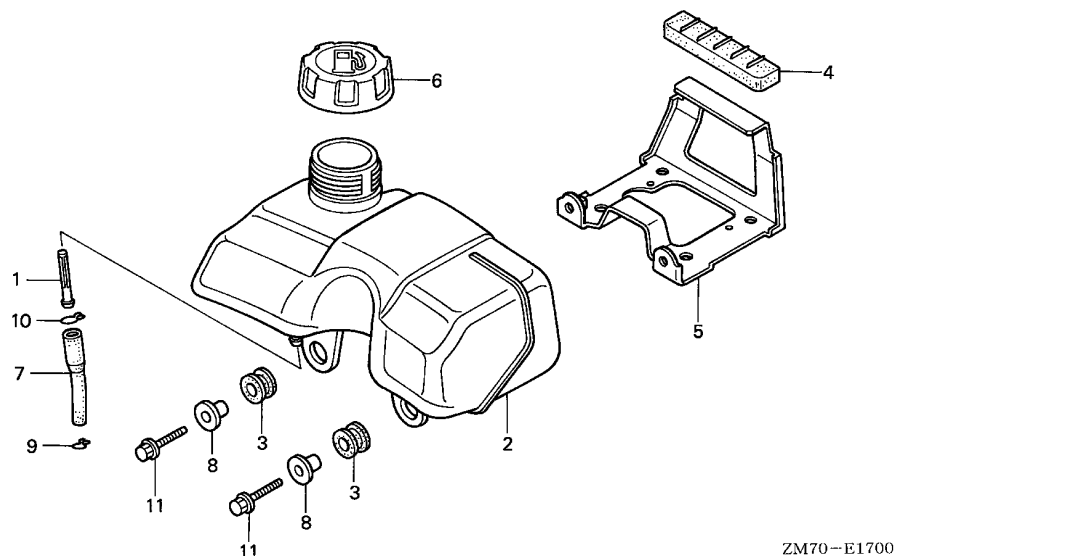




2

Ref. No.	Part No.	Description	Reqd. QTY		Serial No.	Parts catalogue code
				GXH 50		

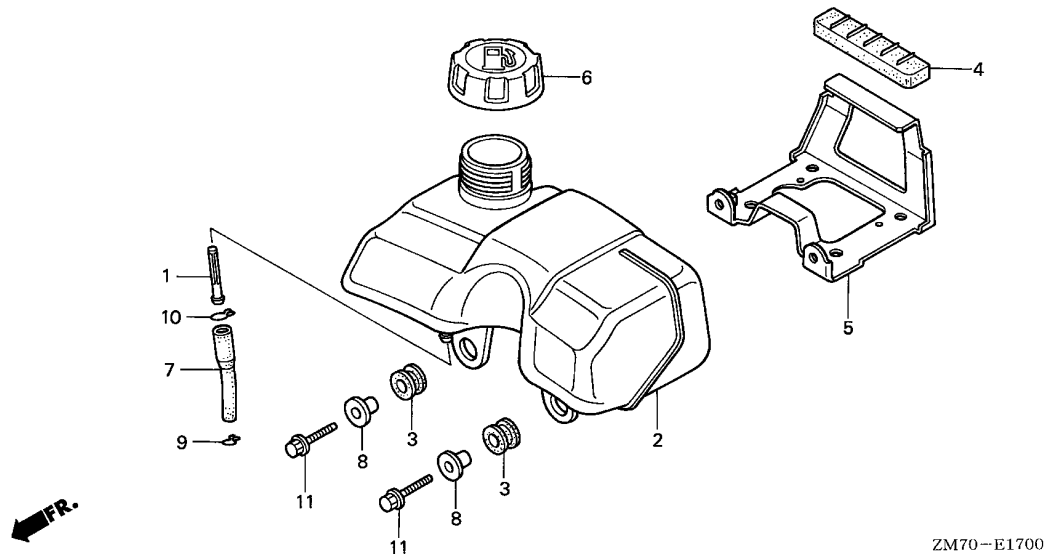
11	18310-ZM7-V31	MUFFLER COMP.	1		-----	QEB2,QEB2/A,QEB4,QEB4/A
	18310-ZM7-V41	(1)		-----	QEB2,QEB2/A



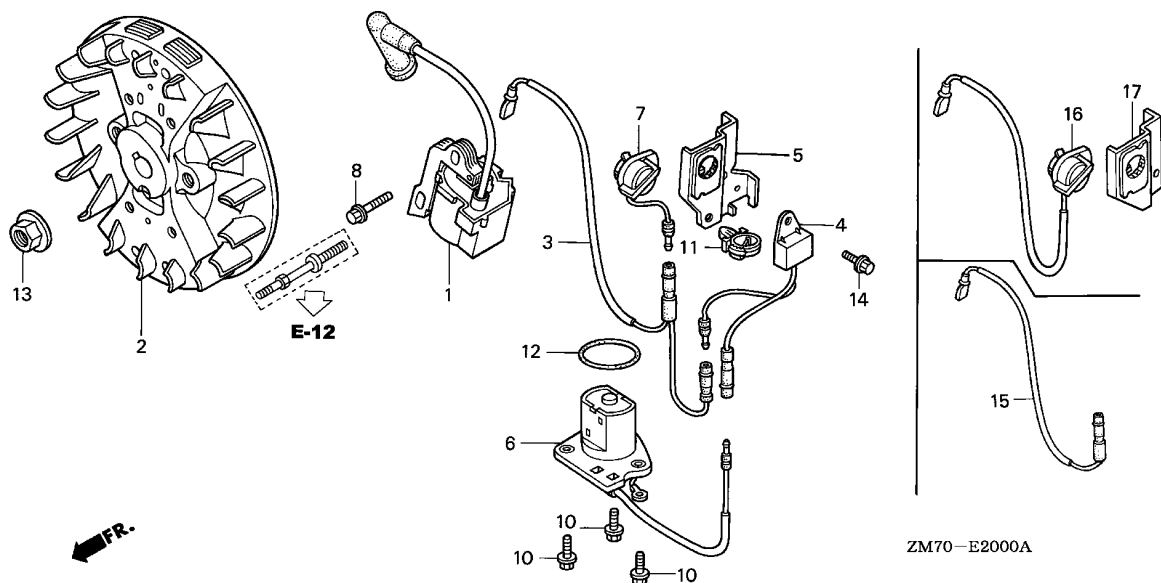
Service item F.R.T.



Ref. No.	Part No.	Description	Reqd. QTY	Serial No.	Parts catalogue code
			GXH 50		
1	16952-ZE6-000	STRAINER, FUEL	1	-----	QC, QC/A, QC/B, QEB2, QEB2/A, QEB4, QEB4/A, QU, QU/A, QU/B, QXA, QXA/A, QXA/B, SD, SD/A, SD/B, SE, SE/A, SE/B, SJ, SJ/A, SJ/B, SJK, SJK/A, SJK/B, SPB, SPB/A, SPB/B, SPB4, SPB4/A, SXA, SXA/A, SXA/B
2	17511-ZM7-000	TANK, FUEL	1	-----	QC, QC/A, QC/B, QEB2, QEB2/A, QEB4, QEB4/A, QU, QU/A, QU/B, QXA, QXA/A, QXA/B, SD, SD/A, SD/B, SE, SE/A, SE/B, SJ, SJ/A, SJ/B, SJK, SJK/A, SJK/B, SPB, SPB/A, SPB/B, SPB4, SPB4/A, SXA, SXA/A, SXA/B
3	17532-ZM7-000	RUBBER A, TANK MOUNTING	2	-----	QC, QC/A, QC/B, QEB2, QEB2/A, QEB4, QEB4/A, QU, QU/A, QU/B, QXA, QXA/A, QXA/B, SD, SD/A, SD/B, SE, SE/A, SE/B, SJ, SJ/A, SJ/B, SJK, SJK/A, SJK/B, SPB, SPB/A, SPB/B, SPB4, SPB4/A, SXA, SXA/A, SXA/B
4	17533-ZM7-000	RUBBER B, TANK MOUNTING	1	-----	QC, QC/A, QC/B, QEB2, QEB2/A, QEB4, QEB4/A, QU, QU/A, QU/B, QXA, QXA/A, QXA/B, SD, SD/A, SD/B, SE, SE/A, SE/B, SJ, SJ/A, SJ/B, SJK, SJK/A, SJK/B, SPB, SPB/A, SPB/B, SPB4, SPB4/A, SXA, SXA/A, SXA/B
5	17560-ZM7-000	STAY COMP., FUEL TANK	1	-----	QC, QC/A, QC/B, QEB2, QEB2/A, QEB4, QEB4/A, QU, QU/A, QU/B, QXA, QXA/A, QXA/B, SD, SD/A, SD/B, SE, SE/A, SE/B, SJ, SJ/A, SJ/B, SJK, SJK/A, SJK/B, SPB, SPB/A, SPB/B, SPB4, SPB4/A, SXA, SXA/A, SXA/B
6	17620-ZL8-003 17620-ZL8-013	CAP ASSY., FUEL TANK	1	1159947	QC, QU, QXA, SD, SE, SJ, SPB, SXA
		1	-----	QC/A, QC/B, QEB2, QEB2/A, QEB4, QEB4/A, QU/A, QU/B, QXA/A, QXA/B, SD/A, SD/B, SE/A, SE/B, SJ/A, SJ/B, SJK, SJK/A, SJK/B, SPB/A, SPB/B, SPB4, SPB4/A, SXA/A, SXA/B
7	17701-ZM7-000	TUBE A, FUEL	1	1159948	QC, QU, QXA, SD, SE, SJ, SPB, SXA
		1	-----	QC, QC/A, QC/B, QEB2, QEB2/A, QEB4, QEB4/A, QU, QU/A, QU/B, QXA, QXA/A, QXA/B, SD, SD/A, SD/B, SE, SE/A, SE/B, SJ, SJ/A, SJ/B, SJK, SJK/A, SJK/B, SPB, SPB/A, SPB/B, SPB4, SPB4/A, SXA, SXA/A, SXA/B
8	19052-MB4-880	COLLAR, CANISTER MOUNTING ...	2	-----	QC, QC/A, QC/B, QEB2, QEB2/A, QEB4, QEB4/A, QU, QU/A, QU/B, QXA, QXA/A, QXA/B, SD, SD/A, SD/B, SE, SE/A, SE/B, SJ, SJ/A, SJ/B, SJK, SJK/A, SJK/B, SPB, SPB/A, SPB/B, SPB4, SPB4/A, SXA, SXA/A, SXA/B
9	95002-02080	CLIP, TUBE (B8)	1	-----	QC, QC/A, QC/B, QEB2, QEB2/A, QEB4, QEB4/A, QU, QU/A, QU/B, QXA, QXA/A, QXA/B, SD, SD/A, SD/B, SE, SE/A, SE/B, SJ, SJ/A, SJ/B, SJK, SJK/A, SJK/B, SPB, SPB/A, SPB/B, SPB4, SPB4/A, SXA, SXA/A, SXA/B



Ref. No.	Part No.	Description	Reqd. QTY		Serial No.	Parts catalogue code
				GXH 50		
10	95002-02120	CLIP, TUBE (B12)	1	-----	-----	QC,QU,QXA,SD,SE,SJ,SJK,SPB,SXA
	95002-02100	CLIP, TUBE (B10)	1	-----	-----	QC/A,QC/B,QEB2,QEB2/A,QEB4,QEB4/A,QU/A,QU/B,QXA/A,QXA/B,SD/A,SD/B,SE/A SE/B,SJ/A,SJ/B,SJK/A,SJK/B,SPB/A,SPB/B,SPB4,SPB4/A,SXA/A,SXA/B
11	95701-06020-07	BOLT, FLANGE, 6X20	2	-----	-----	QC,QC/A,QC/B,QEB2,QEB2/A,QEB4,QEB4/A,QU,QU/A,QU/B,QXA,QXA/A,QXA/B,SD,SD/A SD/B,SE,SE/A,SE/B,SJ,SJ/A,SJ/B,SJK,SJK/A,SJK/B,SPB,SPB/A,SPB/B,SPB4 SPB4/A,SXA,SXA/A,SXA/B

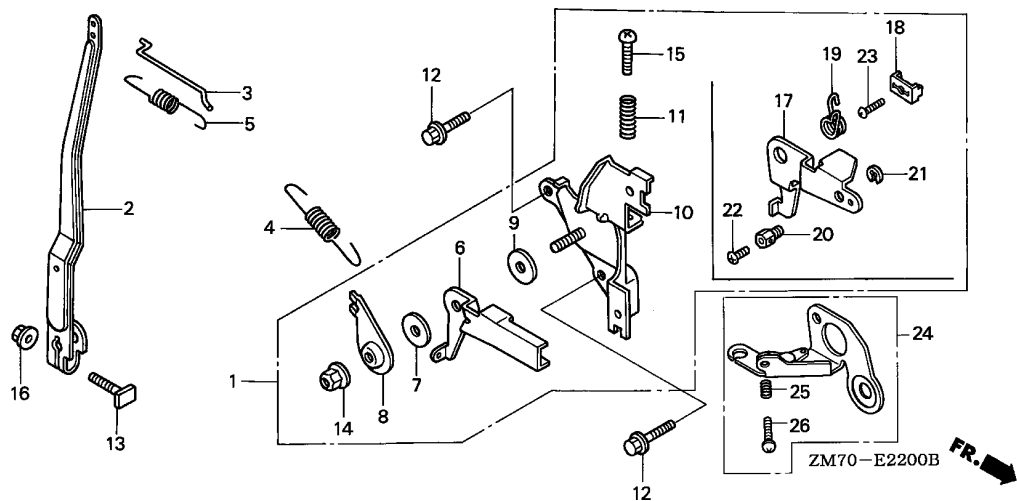


Service item

F.R.T.

Ref. No.	Part No.	Description	Reqd. QTY	Serial No.	Parts catalogue code
			GXH 50		
1	30500-ZM7-004	COIL ASSY., IGNITION	1		
2	31110-ZM7-004	FLYWHEEL COMP.	1		
3	32195-ZM7-800	CORD, STOP SWITCH	1	-----	QHA, QHA/A, QHA/B, QHE, QHE/A, QHE/B, QHM, QHM/A, QXA, QXA/A, QXA/B, SXA, SXA/A, SXA/B
4	34150-ZH7-003	ALERT UNIT, OIL	1	-----	QXA, QXA/A, QXA/B, SXA, SXA/A, SXA/B
5	35124-ZM7-800	BRACKET COMP., STOP SWITCH ..	1	-----	QXA, QXA/A, QXA/B, SXA, SXA/A, SXA/B
6	35480-ZM7-801	SWITCH ASSY., OIL LEVEL	1	-----	QHA, QHA/A, QHA/B, QHE, QHE/A, QHE/B, QHM, QHM/A, QXA, QXA/A, QXA/B, SXA, SXA/A, SXA/B
7	36100-ZE1-015	SWITCH ASSY., ENGINE STOP ...	1	-----	QXA, QXA/A, QXA/B, SXA, SXA/A, SXA/B
8	90004-ZC3-000	BOLT, FLANGE, 5X20	1		
10	90012-896-750	BOLT, FLANGE, 5X14	3	-----	QHA, QHA/A, QHA/B, QHE, QHE/A, QHE/B, QHM, QHM/A, QXA, QXA/A, QXA/B, SXA, SXA/A, SXA/B
11	90684-ZA0-601	CLIP, HARNESS	1	-----	QXA, QXA/A, QXA/B, SXA, SXA/A, SXA/B
12	91301-ZA8-003	O-RING, 34.6X2.5	1	-----	QHA, QHE, QXA, SXA
	91301-ZM7-003	1	-----	QHA/A, QHA/B, QHE/A, QHE/B, QHM, QHM/A, QXA/A, QXA/B, SXA/A, SXA/B
13	94050-10000	NUT, FLANGE, 10MM	1		
14	95701-06008-00	BOLT, FLANGE, 6X8	1	-----	QXA, QXA/A, QXA/B, SXA, SXA/A, SXA/B
15	32195-ZN4-000	CORD, STOP SWITCH	1	-----	SPB, SPB/A, SPB/B, SPB4, SPB4/A
16	35120-ZM7-003	SWITCH ASSY., ENGINE STOP ...	1	-----	QC, QC/A, QC/B, QU, QU/A, QU/B, SD, SD/A, SD/B, SJ, SJ/A, SJ/B, SJK, SJK/A, SJK/B
	35120-ZM7-801	1	-----	QEB2, QEB2/A, QEB4, QEB4/A, SE, SE/A, SE/B
17	35124-ZM7-000	BRACKET COMP., STOP SWITCH ..	1	-----	QC, QC/A, QC/B, QU, QU/A, QU/B, SD, SD/A, SD/B, SE, SE/A, SE/B, SJ, SJ/A, SJ/B, SJK, SJK/A, SJK/B
	35124-ZM7-V30	1	-----	QEB2, QEB2/A, QEB4, QEB4/A

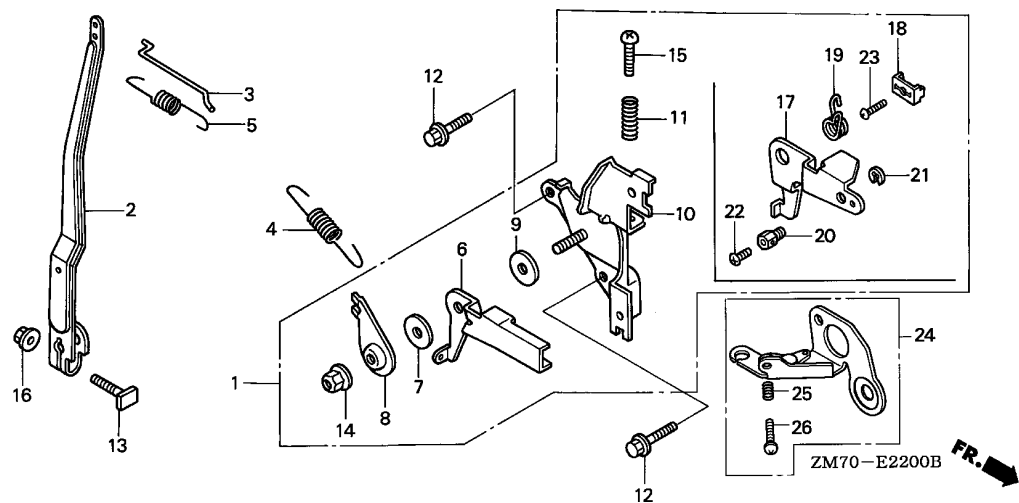




Service item

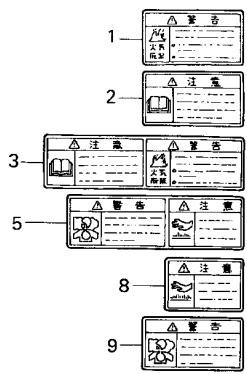
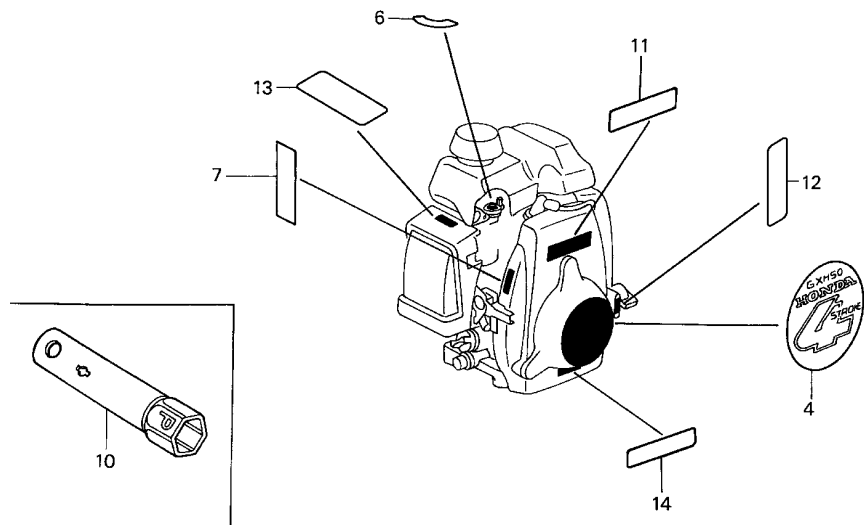
F.R.T.

Ref. No.	Part No.	Description	Reqd. QTY	Serial No.	Parts catalogue code
			GXH 50		
1	16500-ZM7-000	CONTROL ASSY.	1	-----	QC, QC/A, QC/B, QHA, QHA/A, QHA/B, QHE, QHE/A, QHE/B, QHM, QHM/A, QU, QU/A, QU/B, QXA, QXA/A, QXA/B, SD, SD/A, SD/B, SE, SE/A, SE/B, SJ, SJ/A, SJ/B, SPB, SPB/A, SPB/B, SXA, SXA/A, SXA/B
	16500-ZM7-U00	1	-----	SJK, SJK/A, SJK/B
	16500-ZM7-V50	1	-----	SPB4, SPB4/A
2	16551-ZM7-000	ARM, GOVERNOR	1	-----	
3	16555-ZM7-000	ROD, GOVERNOR	1	-----	
4	16561-ZM7-000	SPRING, GOVERNOR	1	-----	QC, QC/A, QC/B, QU, QU/A, QU/B, QXA, QXA/A, QXA/B, SD, SD/A, SD/B, SE, SE/A, SE/B, SJ, SJ/A, SJ/B, SJK, SJK/A, SJK/B, SPB, SPB/A, SPB/B, SXA, SXA/A, SXA/B
	16561-ZN4-000	1	-----	QHA, QHA/A, QHA/B, QHE, QHE/A, QHE/B, QHM, QHM/A, SPB4, SPB4/A
	16561-ZM7-D10	1	-----	QEB2, QEB2/A, QEB4, QEB4/A
5	16562-ZM7-000	SPRING, THROTTLE RETURN	1	-----	
6	16571-ZM7-000	LEVER, CONTROL	1	-----	QC, QC/A, QC/B, QHA, QHA/A, QHA/B, QHE, QHE/A, QHE/B, QHM, QHM/A, QU, QU/A, QU/B, QXA, QXA/A, QXA/B, SD, SD/A, SD/B, SE, SE/A, SE/B, SJ, SJ/A, SJ/B, SPB, SPB/A, SPB/B, SPB4, SPB4/A, SXA, SXA/A, SXA/B
7	16574-ZE1-000	SPRING, LEVER	1	-----	QC, QC/A, QC/B, QHA, QHA/A, QHA/B, QHE, QHE/A, QHE/B, QHM, QHM/A, QU, QU/A, QU/B, QXA, QXA/A, QXA/B, SD, SD/A, SD/B, SE, SE/A, SE/B, SJ, SJ/A, SJ/B, SPB, SPB/A, SPB/B, SPB4, SPB4/A, SXA, SXA/A, SXA/B
8	16575-ZH8-000	WASHER, CONTROL LEVER	1	-----	QC, QC/A, QC/B, QHA, QHA/A, QHA/B, QHE, QHE/A, QHE/B, QHM, QHM/A, QU, QU/A, QU/B, QXA, QXA/A, QXA/B, SD, SD/A, SD/B, SE, SE/A, SE/B, SJ, SJ/A, SJ/B, SPB, SPB/A, SPB/B, SPB4, SPB4/A, SXA, SXA/A, SXA/B
9	16578-ZE1-000	SPACER, CONTROL LEVER	1	-----	QC, QC/A, QC/B, QHA, QHA/A, QHA/B, QHE, QHE/A, QHE/B, QHM, QHM/A, QU, QU/A, QU/B, QXA, QXA/A, QXA/B, SD, SD/A, SD/B, SE, SE/A, SE/B, SJ, SJ/A, SJ/B, SPB, SPB/A, SPB/B, SPB4, SPB4/A, SXA, SXA/A, SXA/B
10	16580-ZM7-000	BASE COMP., CONTROL	1	-----	QC, QC/A, QC/B, QHA, QHA/A, QHA/B, QHE, QHE/A, QHE/B, QHM, QHM/A, QU, QU/A, QU/B, QXA, QXA/A, QXA/B, SD, SD/A, SD/B, SE, SE/A, SE/B, SJ, SJ/A, SJ/B, SPB, SPB/A, SPB/B, SPB4, SPB4/A, SXA, SXA/A, SXA/B
	16580-ZM7-U00	1	-----	SJK, SJK/A, SJK/B



Ref. No.	Part No.	Description	Reqd. QTY	Serial No.	Parts catalogue code
			GXH 50		
11	16584-ZE3-790	SPRING, CONTROL ADJUSTING	1	-----	QC, QC/A, QC/B, QHA, QHA/A, QHA/B, QHE, QHE/A, QHE/B, QHM, QHM/A, QU, QU/A, QU/B, QXA, QXA/A, QXA/B, SD, SD/A, SD/B, SE, SE/A, SE/B, SJ, SJ/A, SJ/B, SJK, SJK/A, SJK/B, SPB, SPB/A, SPB/B, SPB4, SPB4/A, SXA, SXA/A, SXA/B
12	90003-892-000	BOLT, FLANGE, 5X12	2	-----	
13	90015-ZE5-010	BOLT, GOVERNOR ARM	1	-----	
14	90114-SA0-000	NUT, SELF-LOCK, 6MM	1	-----	QC, QC/A, QC/B, QHA, QHA/A, QHA/B, QHE, QHE/A, QHE/B, QHM, QHM/A, QU, QU/A, QU/B, QXA, QXA/A, QXA/B, SD, SD/A, SD/B, SE, SE/A, SE/B, SJ, SJ/A, SJ/B, SPB, SPB/A, SPB/B, SPB4, SPB4/A, SXA, SXA/A, SXA/B
	94050-06000	NUT, FLANGE, 6MM	1	-----	SJK, SJK/A, SJK/B
15	93500-05020-0A	SCREW, PAN, 5X20	1	-----	QC, QC/A, QC/B, QHA, QHA/A, QHA/B, QHE, QHE/A, QHE/B, QHM, QHM/A, QU, QU/A, QU/B, QXA, QXA/A, QXA/B, SD, SD/A, SD/B, SE, SE/A, SE/B, SJ, SJ/A, SJ/B, SJK, SJK/A, SJK/B, SPB, SPB/A, SPB/B, SPB4, SPB4/A, SXA, SXA/A, SXA/B
	93500-05025-0G	SCREW, PAN, 5X25	1	-----	SPB4, SPB4/A
16	94050-06000	NUT, FLANGE, 6MM	1	-----	SJK, SJK/A, SJK/B
17	16571-ZM7-U00	LEVER, CONTROL	1	-----	SJK, SJK/A, SJK/B
18	16576-891-000	HOLDER, CABLE	1	-----	SJK, SJK/A, SJK/B
19	16592-ZM7-U00	SPRING, RETURN	1	-----	SJK, SJK/A, SJK/B
20	16594-883-010	HOLDER, WIRE	1	-----	SJK, SJK/A, SJK/B
21	90605-230-000	CIRCLIP, 5MM	1	-----	SJK, SJK/A, SJK/B
22	93500-04006-0H	SCREW, PAN, 4X6	1	-----	SJK, SJK/A, SJK/B
23	93500-05016-0A	SCREW, PAN, 5X16	1	-----	SJK, SJK/A, SJK/B
24	16500-ZM7-D10	CONTROL ASSY.	1	-----	QEB2, QEB2/A, QEB4, QEB4/A
25	16571-836-000	SPRING, CONTROL ADJUSTING	1	-----	QEB2, QEB2/A, QEB4, QEB4/A
26	93500-04018-0H	SCREW, PAN, 4X18	1	-----	QEB2, QEB2/A, QEB4, QEB4/A

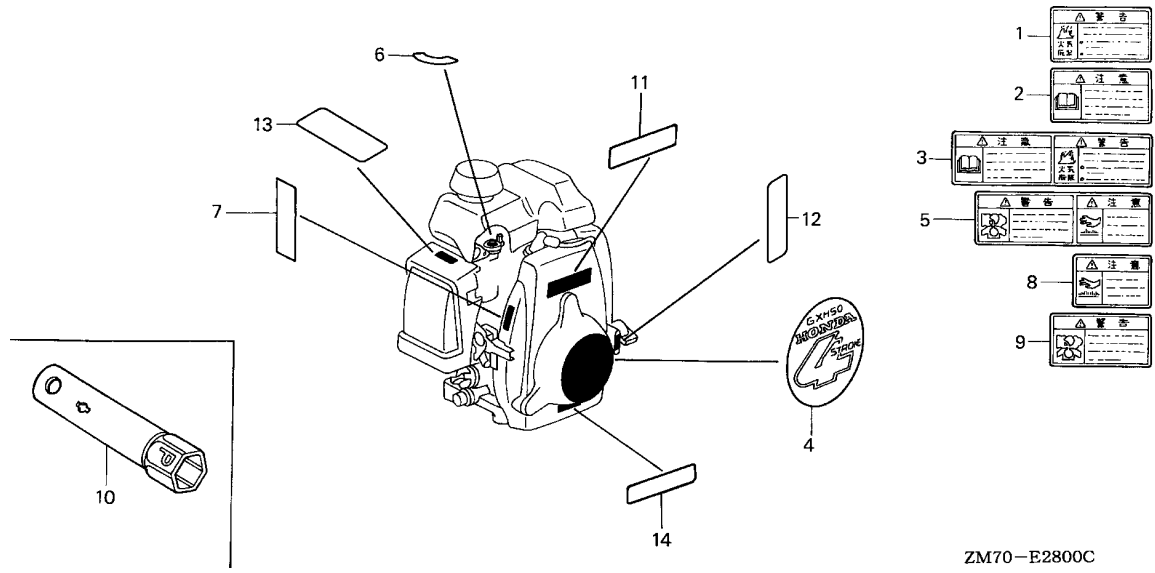




ZM70-E2800C

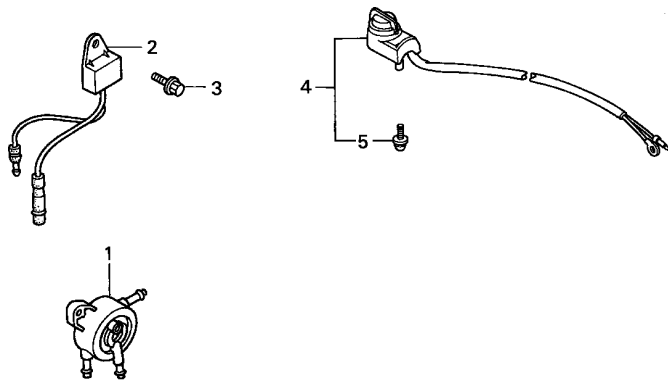
Service item F.R.T.

Ref. No.	Part No.	Description	Reqd. QTY	Serial No.	Parts catalogue code
			GXH 50		
1	87106-737-J00	MARK, FUEL WARNING	(1)	-----	SJ,SJ/A,SJ/B
2	87150-ZH8-000	MARK, CAUTION (JAPANESE)	(1)	-----	SJ,SJ/A,SJ/B
3	87520-ZH8-000	MARK A, COMBINATION	(1)	-----	SJ,SJ/A,SJ/B
	87520-ZL8-810	MARK A, COMBINATION (J)	1	-----	SJK,SJK/A,SJK/B
4	87521-ZM7-000	EMBLEM	1	-----	QC,QHA,QHE,QU,QXA,SD,SE,SJ,SJK,SPB,SXA
			1	1344772	QC/A,QHA/A,QHE/A,QU/A,QXA/A,SD/A,SE/A,SJ/A,SJK/A,SPB/A,SXA/A
	87521-ZM7-010	1	-----	QC/B,QEB2/A,QEB4/A,QHA/B,QHE/B,QHM,QHM/A,QU/B,QXA/B,SD/B,SE/B,SJ/B,SJK/B SPB/B,SPB4,SPB4/A,SXA/B
			1	1344773	QC/A,QHA/A,QHE/A,QU/A,QXA/A,SD/A,SE/A,SJ/A,SJK/A,SPB/A,SXA/A
			1	1396852	QEB2,QEB4
5	87526-ZH8-000	MARK B, COMBINATION	(1)	-----	SJ,SJ/A,SJ/B
	87526-ZL8-810	MARK B, COMBINATION (J)	1	-----	SJK,SJK/A,SJK/B
6	87528-ZG0-W40	MARK, COCK (EXTERNAL)	1	-----	QC,QC/A,QC/B,QEB2/A,QEB4/A,QHA,QHA/A,QHA/B,QHE,QHE/A,QHE/B,QHM,QHM/A,QU QU/A,QU/B,QXA,QXA/A,QXA/B,SD,SD/A,SD/B,SE,SE/A,SE/B,SJ,SJ/A,SJ/B,SJK SJK/A,SJK/B,SPB,SPB/A,SPB/B,SPB4,SPB4/A,SXA,SXA/A,SXA/B
			1	1396852	QEB2,QEB4
7	87532-ZM3-G00	MARK, THROTTLE INDICATION ...	1	-----	QC,QC/A,QC/B,QHA,QHA/A,QHA/B,QHE,QHE/A,QHE/B,QHM,QHM/A,QU,QU/A,QU/B,QXA QXA/A,QXA/B,SD,SD/A,SD/B,SE,SE/A,SE/B,SJ,SJ/A,SJ/B,SPB,SPB/A,SPB/B,SPB4 SPB4/A,SXA,SXA/A,SXA/B
8	87539-737-J00	MARK, HEAT CAUTION	(1)	-----	SJ,SJ/A,SJ/B
9	87561-733-J00	MARK, EX. GAS WARNING	(1)	-----	SJ,SJ/A,SJ/B
10	89216-130-690	WRENCH, SPARK PLUG	1	-----	SJK,SJK/A,SJK/B
			(1)	-----	QC,QC/A,QC/B,QEB2,QEB2/A,QEB4,QEB4/A,QHA,QHA/A,QHA/B,QHE,QHE/A,QHE/B,QHM QHM/A,QU,QU/A,QU/B,QXA,QXA/A,QXA/B,SD,SD/A,SD/B,SE,SE/A,SE/B,SJ,SJ/A,SJ/B SPB,SPB/A,SPB/B,SPB4,SPB4/A,SXA,SXA/A,SXA/B
11	87135-ZE2-010	LABEL, E-SPEC (EPA STANDARD)	1	-----	QHE,QU,SD,SE,SJ,SJK,SPB



Ref. No.	Part No.	Description	Reqd. QTY		Serial No.	Parts catalogue code
				GXH 50		
11)	87135-ZE2-020	LABEL, E-SPEC (15.5X27.5) ...	1	-----	-----	QEB4,QEB4/A,QHE/A,QHE/B,QU/A,QU/B,SD/A,SD/B,SE/A,SE/B,SJ/A,SJ/B,SJK/A SJK/B,SPB/A,SPB/B
	12	87501-ZL8-000 MARK, ENGINE SWITCH INDICATION	1	-----	-----	QEB2,QEB2/A
		87501-ZL8-800 MARK, ENGINE SWITCH INDICATION (EN)	1	-----	-----	QEB4,QEB4/A
	13	87528-Z0D-000 MARK, CHOKE INDICATION	1	-----	-----	QEB2,QEB2/A,QEB4,QEB4/A
	14	87637-ZM3-800 MARK (C-TICK)	1	-----	-----	QU/B





ZM70-B4000A

Service item

F.R.T.

Ref. No.	Part No.	Description	Reqd. QTY		Serial No.	Parts catalogue code
				GXH 50		
1	16700-ZT3-003	PUMP ASSY., FUEL	1	-----	-----	QHA, QHE
	16700-ZT3-013	1	-----	-----	QHA/A, QHA/B, QHE/A, QHE/B, QHM, QHM/A
2	34150-ZH7-003	ALERT UNIT, OIL	1	-----	-----	QHA, QHA/A, QHA/B, QHE, QHE/A, QHE/B, QHM, QHM/A
3	95701-06008-00	BOLT, FLANGE, 6X8	1	-----	-----	QHA, QHA/A, QHA/B, QHE, QHE/A, QHE/B, QHM, QHM/A
4	35120-746-C21	SWITCH ASSY., ENGINE STOP ...	1	-----	-----	SPB4, SPB4/A
5	90105-733-D61	BOLT, 3X12(SEMS)	1	-----	-----	SPB4, SPB4/A

PART NO. INDEX

E 2

Part Number	Address	Page	Ref.	Part Number	Address	Page	Ref.	Part Number	Address	Page	Ref.	Part Number	Address	Page	Ref.
94050-06000	D4	31	16												
94050-10000	D2	29	13												
94251-06000	C1	12	11												
94301-06100	C4	15	8												
95000															
95002-02080	C16	27	9												
95002-02100	D1	28	10												
95002-02120	D1	28	10												
95003-05010-31	C12	23	12												
95005-70075-30	C13	24	9												
95701-06008-00	D2	29	14												
	D7	34	3												
95701-06020-07	D1	28	11												
95701-08012-08	C3	14	7												
96000															
96100-62030-00	C5	16	4												
96220-60150	C1	12	12												
98000															
98056-54750	C1	12	13												
98056-54757	C1	12	13												
98056-54770	C1	12	13												
98056-54777	C2	13	13												
98056-55750	C2	13	13												
98056-55757	C2	13	13												
98056-55770	C2	13	13												
98056-55777	C2	13	13												
99000															
99101-ZG0-0480	C12	23	22												
99101-ZG0-0500	C12	23	22												
99101-ZG0-0520	C12	23	22												
99101-ZG0-0550	C12	23	22												
99204-ZE2-0350	C12	23	23												

3

PART NAME INDEX

F 1

Part name	Address	Page	Ref.	Part name	Address	Page	Ref.	Part name	Address	Page	Ref.
[A]								[L]			
ALERT UNIT, OIL	D2	29	4	COLLAR, AIR CLEANER	C13	24	8	LABEL, E-SPEC	D5	32	11
	D7	34	2	COLLAR, CANISTER MOUNTING	C16	27	8		D6	33	11
ARM, GOVERNOR	D3	30	2	COLLAR, LIFTER	C7	18	12	LEVER, COCK	C12	23	16
ARM, SWING	C9	20	6	COLLAR, TOP COVER	C14	25	9	LEVER, CONTROL	D3	30	6
ARM, VALVE ROCKER	C7	18	5	CONTROL ASSY.	D3	30	1		D4	31	17
ARRESTER COMP., SPARK	C14	25	3		D4	31	24	LIFTER, EX. VALVE	C8	19	15
				CORD, STOP SWITCH	D2	29	3	LIFTER, VALVE	C7	18	10
[B]				COVER COMP., AIR CLEANER	C13	24	5	[M]			
BARREL COMP., CYLINDER	C1	12	1	COVER COMP., CRANKCASE SIDE ...	C4	15	1	MARK	D6	33	14
BASE COMP., CONTROL	D3	30	10	COVER COMP., FAN	C10	21	1	MARK A, COMBINATION	D5	32	3
BEARING, RADIAL BALL, 6203 ...	C5	16	4	COVER, AIR CLEANER	C13	24	6	MARK B, COMBINATION	D5	32	5
BOLT, 3X12	D7	34	5	COVER, HEAD	C1	12	2	MARK, CAUTION	D5	32	2
BOLT, CONNECTING ROD	C6	17	8	CRANKSHAFT COMP.	C5	16	1	MARK, CHOKE INDICATION	D6	33	13
BOLT, FLANGE, 5X12	C1	12	7	[D]				MARK, COCK	D5	32	6
	C2	13	14	DIPPER, CONNECTING ROD	C6	17	7	MARK, ENGINE SWITCH INDICATION	D6	33	12
	D4	31	12	DOWEL PIN, 6X10	C4	15	8	MARK, EX. GAS WARNING	D5	32	9
BOLT, FLANGE, 5X14	D2	29	10	[E]				MARK, FUEL WARNING	D5	32	1
BOLT, FLANGE, 5X16	C14	25	6	ELEMENT, AIR CLEANER	C13	24	1	MARK, HEAT CAUTION	D5	32	8
BOLT, FLANGE, 5X20	D2	29	8	EMBLEM	D5	32	4	MARK, THROTTLE INDICATION	D5	32	7
BOLT, FLANGE, 5X23	C3	14	4	[F]				MUFFLER COMP.	C14	25	1
	C4	15	4	FLOAT SET	C11	22	3		C15	26	11
BOLT, FLANGE, 5X35	C14	25	7	FLYWHEEL COMP.	D2	29	2	[N]			
BOLT, FLANGE, 5X75	C13	24	7	[G]				NOZZLE, MAIN	C12	23	11
BOLT, FLANGE, 5X80	C13	24	7	GASKET SET	C11	22	1	NUT, FLANGE, 10MM	D2	29	13
BOLT, FLANGE, 6X20	D1	28	11	GOVERNOR ASSY.	C4	15	2	NUT, FLANGE, 5MM	C9	20	10
BOLT, FLANGE, 6X28	D2	29	14	GRIP, STARTER	C9	20	13	NUT, FLANGE, 6MM	D4	31	14
	D7	34	3	GUIDE, AIR	C14	25	4				
BOLT, FLANGE, 8X12	C3	14	7	GUIDE, ROPE	C9	20	4	NUT, SELF-LOCK, 5MM	C14	25	8
BOLT, GOVERNOR ARM	D4	31	13	[H]				NUT, SELF-LOCK, 6MM	D4	31	14
BOLT, STUD	C10	21	2	HOLDER, CABLE	D4	31	18	NUT, TAPPET ADJUSTING	C8	19	14
				HOLDER, WIRE	D4	31	20	[O]			
BOLT, STUD, 2,5X55	C14	25	5	[I]				OIL SEAL, 17X27X5	C3	14	6
BRACKET COMP., STOP SWITCH ...	D2	29	5	INSULATOR, CARBURETOR	C12	23	13		C4	15	7
				[J]				OIL SEAL, 5X11X5	C1	12	9
				JET SET, PILOT,	C12	23	23	O-RING, 34.6X2.5	D2	29	12
				JET, MAIN,	C12	23	22	[P]			
[C]				[K]				PACKING, 8MM	C3	14	5
CAMSHAFT ASSY.	C7	18	2	KEY, 4.78MM	C5	16	5	PACKING, AIR CLEANER	C12	23	28
CAP ASSY., FUEL TANK	C16	27	6	KEY, 5MM	C5	16	5		C13	24	4
CAP ASSY., OIL FILLER	C3	14	2	KEY, SPECIAL	C5	16	3	PACKING, CARBURETOR	C12	23	15
CARBURETOR ASSY.	C11	22	9	KNOB, RECOIL STARTER	C9	20	7	PACKING, FUEL COCK	C12	23	19
CASE ASSY., OIL	C3	14	1	[L]				PACKING, INSULATOR	C12	23	14
CASE COMP., AIR CLEANER	C13	24	2	[M]				PACKING, OIL FILLER CAP	C3	14	3
CASE COMP., STARTER	C9	20	2	[N]				PIN, LOCK, 6MM	C1	12	11
CASE, RECOIL STARTER	C9	20	2	[O]				PIN, OIL PUMP	C7	18	3
CHAMBER SET, FLOAT	C11	22	4	[P]				PIN, PISTON, 10X33	C6	17	3
	C12	23	24	[Q]				PISTON	C6	17	2
CHOKE SET	C11	22	8	[R]				PIVOT, ROCKER ARM	C7	18	7
CIRCLIP, 5MM	D4	31	21	[S]				PLATE, LEVER SETTING	C12	23	17
CLIP, GOVERNOR HOLDER	C4	15	6	[T]							
CLIP, HARNESS	D2	29	11	[U]							
CLIP, PISTON PIN, 10MM	C6	17	4	[V]							
CLIP, TUBE	C16	27	9	[W]							
	D1	28	10	[X]							
COIL ASSY., IGNITION	D2	29	1	[Y]							
COLLAR	C9	20	9	[Z]							

PART NAME INDEX

F 2

Part name	Address	Page	Ref.	Part name	Address	Page	Ref.	Part name	Address	Page	Ref.
PLATE, STOPPER	C1	12	4	SWITCH ASSY., ENGINE STOP	D2	29	7				
PLUG, SPARK	C1	12	13				16				
	C2	13	13		D7	34	4				
PROTECTOR COMP., MUFFLER	C14	25	2	SWITCH ASSY., OIL LEVEL	D2	29	6				
PULLEY, RECOIL STARTER	C9	20	5								
PUMP ASSY., FUEL	D7	34	1	[T]							
[R]				TANK, FUEL	C16	27	2				
REEL, RECOIL STARTER	C9	20	3	TUBE	C12	23	12				
RETAINER, VALVE SPRING	C7	18	13	TUBE A, FUEL	C16	27	7				
	C8	19	13	TUBE, 7X75	C13	24	9				
RING SET, PISTON	C6	17	1	TUBE, VINYL, 3.5X6.5X100	C12	23	12				
ROD ASSY., CONNECTING	C6	17	5	[V]							
ROD, GOVERNOR	D3	30	3	VALVE SET, FLOAT	C11	22	2				
ROD, PUSH	C7	18	4	VALVE, EX.	C7	18	9				
ROLLER	C7	18	3	VALVE, IN.	C7	18	8				
			6	VALVE, OIL OUTLET	C1	12	3				
ROLLER, 6X15	C1	12	12	[W]							
ROPE, RECOIL STARTER	C9	20	8	WASHER, 4.2X13	C4	15	5				
RUBBER A, TANK MOUNTING	C16	27	3	WASHER, 5.2X9	C1	12	8				
RUBBER B, TANK MOUNTING	C16	27	4	WASHER, CONTROL LEVER	D3	30	8				
[S]				WRENCH, SPARK PLUG	D5	32	10				
SCREW SET	C11	22	7								
SCREW SET, DRAIN	C11	22	6								
	C12	23	25								
SCREW SET, PILOT	C11	22	5								
	C12	23	26								
SCREW, PAN, 3X5	C1	12	10								
SCREW, PAN, 3X6	C12	23	21								
SCREW, PAN, 4X18	D4	31	26								
SCREW, PAN, 4X6	D4	31	22								
SCREW, PAN, 5X16	D4	31	23								
SCREW, PAN, 5X20	D4	31	15								
SCREW, PAN, 5X25	D4	31	15								
SCREW, SETTING	C9	20	11								
SCREW, TAPPING, 4X8	C14	25	10								
SCREW, THROTTLE STOP	C11	22	10								
SEAL, AIR CLEANER	C13	24	3								
SHAFT, GOVERNOR ARM	C1	12	5								
SHROUD	C1	12	6								
SLIDER, GOVERNOR	C4	15	3								
SPACER, CARBURETOR	C12	23	27								
SPACER, CONTROL LEVER	D3	30	9								
SPRING, COCK LEVER	C12	23	18								
SPRING, CONTROL ADJUSTING	D4	31	11								
			25								
SPRING, FRICTION	C9	20	12								
SPRING, GOVERNOR	D3	30	4								
SPRING, LEVER	D3	30	7								
SPRING, RECOIL STARTER	C9	20	14								
SPRING, RETURN	D4	31	19								
SPRING, THROTTLE RETURN	D3	30	5								
SPRING, VALVE	C7	18	11								
STARTER ASSY., RECOIL	C9	20	1								
STAY COMP., FUEL TANK	C16	27	5								
STRAINER, FUEL	C16	27	1								

1

FOREWORD INDEX

2

ENGINE GROUP

3

PART NUMBER INDEX

4

PART NAME INDEX

HONDA
The Power of Dreams

July 11, 2004



PARTS CATALOG NEWS

Honda Motor Co., Ltd. Service Division

PARTS CATALOG - CORRECTED

Printed in Japan

CODE NO.	14ZM70E6
PARTS CATALOG NEWS	GXH50
NEWS NO.	001

Block No.	Ref. No.	Note	Part No.	Description	Reqd. QTY	Serial No.	Parts catalog code
					GXH 50		
E-14	9	L	16100-ZM7-G13	CARBURETOR ASSY. (BF32E C) ...	1	----- 1535925	QC/B, QHA/B, QHE/B, QHM/A, QU/B, QXA/B, SD/B, SJ/B, SJK/B
			16100-ZM7-G14	CARBURETOR ASSY. (BF32E D) ...	1	1535926 -----	QC/B, QHA/B, QHE/B, QHM/A, QU/B, QXA/B, SD/B, SJ/B, SJK/B
	11	L	16166-ZM7-003	NOZZLE, MAIN (CARBURETOR NO.)	1	----- BF32C C	SE/B, SPB/B, SPB4/A, SXA/B
				(CARBURETOR NO.)	1	----- BF32E C	QC/B, QHA/B, QHE/B, QHM/A, QU/B, QXA/B, SD/B, SJ/B, SJK/B
			D	16166-ZM7-801 (CARBURETOR NO.)	1	BF32C D -----
				(CARBURETOR NO.)	1	BF32E D -----	QC/B, QHA/B, QHE/B, QHM/A, QU/B, QXA/B, SD/B, SJ/B, SJK/B
	22	T	99101-ZG0-0480	JET, MAIN, #48 (CARBURETOR NO.)	(1)	BF32C D -----	SE/B, SPB/B, SPB4/A, SXA/B
				(CARBURETOR NO.)	(1)	BF32E D -----	QC/B, QHA/B, QHE/B, QHM/A, QU/B, QXA/B, SD/B, SJ/B, SJK/B
		K	99101-ZG0-0520	JET, MAIN, #52 (CARBURETOR NO.)	(1)	----- BF32C C	SE/B, SPB/B, SPB4/A, SXA/B
				(CARBURETOR NO.)	(1)	----- BF32E C	QC/B, QHA/B, QHE/B, QHM/A, QU/B, QXA/B, SD/B, SJ/B, SJK/B
	L	99101-ZG0-0550	JET, MAIN, #55 (CARBURETOR NO.)	1	----- BF32C C	SE/B, SPB/B, SPB4/A, SXA/B	
			(CARBURETOR NO.)	1	----- BF32E C	QC/B, QHA/B, QHE/B, QHM/A, QU/B, QXA/B, SD/B, SJ/B, SJK/B	

NOTE A:PART NO. CHANGE D:NEWLY PROVIDED E:PART NO.DELETION K:REQUIRED NO. CORRECTION L:APPLICATION SERIAL NO. CORRECTION
T:APPLICATION CORRECTION Z:REMARKS CHANGE

PARTS CATALOG NEWS

BOOKNo. : 14ZM70E6

Block No.	Ref. No.	Note	Part No.	Description	Reqd. QTY	Serial No.	Parts catalog code
					GXH 50		
		D	99101-ZG0-0520	JET, MAIN, #52 (CARBURETOR NO.)	1	BF32C D -----	SE/B, SPB/B, SPB4/A, SXA/B
				(CARBURETOR NO.)	1	BF32E D -----	QC/B, QHA/B, QHE/B, QHM/A, QU/B, QXA/B, SD/B, SJ/B, SJK/B
	26	L	16016-ZH7-W01	SCREW SET, PILOT (CARBURETOR NO.)	1	----- BF32C C	SE/B, SPB/B, SPB4/A, SXA/B
				(CARBURETOR NO.)	1	----- BF32E C	QC/B, QHA/B, QHE/B, QHM/A, QU/B, QXA/B, SD/B, SJ/B, SJK/B
		D	16016-ZH8-W01	SCREW SET (CARBURETOR NO.)	1	BF32C D -----	SE/B, SPB/B, SPB4/A, SXA/B
				(CARBURETOR NO.)	1	BF32E D -----	QC/B, QHA/B, QHE/B, QHM/A, QU/B, QXA/B, SD/B, SJ/B, SJK/B

NOTE A:PART NO. CHANGE D:NEWLY PROVIDED E:PART NO.DELETION K:REQUIRED NO. CORRECTION L:APPLICATION SERIAL NO. CORRECTION
T:APPLICATION CORRECTION Z:REMARKS CHANGE

September 26, 2004



PARTS CATALOG NEWS

Honda Motor Co., Ltd. Service Division

PARTS CATALOG - CORRECTED

Printed in Japan

CODE NO.	14ZM70E6
PARTS CATALOG NEWS	GXH50
NEWS NO.	002

Block No.	Ref. No.	Note	Part No.	Description	Reqd. QTY	Serial No.	Parts catalog code
					GXH 50		
E-14	8	L	16044-ZM7-003	CHOKE SET	1	----- BF32C D	SE/B, SPB/B, SPB4/A, SXA/B
				(CARBURETOR NO.)	1	----- BF32E D	QC/B, QHA/B, QHE/B, QHM/A, QU/B, QXA/B, SD/B, SJ/B, SJK/B, WK4
		D	16044-ZM7-801	1	BF32C E -----	SE/B, SPB/B, SPB4/A, SXA/B
				(CARBURETOR NO.)	1	BF32E E -----	QC/B, QHA/B, QHE/B, QHM/A, QU/B, QXA/B, SD/B, SJ/B, SJK/B, WK4
	11	L	16166-ZM7-801	NOZZLE, MAIN	1	----- BF32E D	WK4
				(CARBURETOR NO.)	1	BF32C D BF32C D	SE/B, SPB/B, SPB4/A, SXA/B
				(CARBURETOR NO.)	1	BF32E D BF32E D	QC/B, QHA/B, QHE/B, QHM/A, QU/B, QXA/B, SD/B, SJ/B, SJK/B
		D	16166-ZN4-801	1	BF32C E -----	SE/B, SPB/B, SPB4/A, SXA/B
				(CARBURETOR NO.)	1	BF32E E -----	QC/B, QHA/B, QHE/B, QHM/A, QU/B, QXA/B, SD/B, SJ/B, SJK/B, WK4
				(CARBURETOR NO.)	1	BF32E D BF32E D	QC/B, QHA/B, QHE/B, QHM/A, QU/B, QXA/B, SD/B, SJ/B, SJK/B
26	L	16016-ZH8-W01	SCREW SET	1	----- BF32E D	WK4	
			(CARBURETOR NO.)	1	BF32C D BF32C D	SE/B, SPB/B, SPB4/A, SXA/B	
			(CARBURETOR NO.)	1	BF32E D BF32E D	QC/B, QHA/B, QHE/B, QHM/A, QU/B, QXA/B, SD/B, SJ/B, SJK/B	

NOTE A:PART NO. CHANGE D:NEWLY PROVIDED E:PART NO.DELETION K:REQUIRED NO. CORRECTION L:APPLICATION SERIAL NO. CORRECTION
T:APPLICATION CORRECTION Z:REMARKS CHANGE

PARTS CATALOG NEWS

BOOKNo. : 14ZM70E6

Block No.	Ref. No.	Note	Part No.	Description	Reqd. QTY	Serial No.	Parts catalog code
					GXH 50		
		D	16016-ZH7-W01	SCREW SET, PILOT (CARBURETOR NO.)	1	BF32C E -----	SE/B, SPB/B, SPB4/A, SXA/B
				(CARBURETOR NO.)	1	BF32E E -----	QC/B, QHA/B, QHE/B, QHM/A, QU/B, QXA/B, SD/B, SJ/B, SJK/B, WK4
	28	T	17228-ZM7-000	PACKING, AIR CLEANER	0	-----	WK4

NOTE A:PART NO. CHANGE D:NEWLY PROVIDED E:PART NO.DELETION K:REQUIRED NO. CORRECTION L:APPLICATION SERIAL NO. CORRECTION
T:APPLICATION CORRECTION Z:REMARKS CHANGE

October 03, 2004



PARTS CATALOG NEWS

Honda Motor Co., Ltd. Service Division

PARTS CATALOG - CORRECTED

Printed in Japan

CODE NO.	14ZM70E6
PARTS CATALOG NEWS	GXH50
NEWS NO.	003

Block No.	Ref. No.	Note	Part No.	Description	Reqd. QTY	Serial No.	Parts catalog code
					GXH 50		
E-14	9	L	16100-ZM7-803	CARBURETOR ASSY. (BF32C C) ...	1	----- 1537631	SE/B, SPB/B, SPB4/A, SXA/B
		D	16100-ZM7-804	CARBURETOR ASSY. (BF32C D) ...	1	1537632 -----	SE/B, SPB/B, SPB4/A, SXA/B

NOTE A:PART NO. CHANGE D:NEWLY PROVIDED E:PART NO.DELETION K:REQUIRED NO. CORRECTION L:APPLICATION SERIAL NO. CORRECTION
T:APPLICATION CORRECTION Z:REMARKS CHANGE

October 24, 2004



PARTS CATALOG NEWS

Honda Motor Co., Ltd. Service Division

PARTS CATALOG - CORRECTED

Printed in Japan

CODE NO.	14ZM70E6
PARTS CATALOG NEWS	GXH50
NEWS NO.	004

Block No.	Ref. No.	Note	Part No.	Description	Reqd. QTY	Serial No.		Parts catalog code
					GXH 50			
E-14	9	L	16100-ZM7-G14	CARBURETOR ASSY. (BF32E D) ...	1	-----	1562767	WK4
					1	1535926	1562767	QC/B, QHA/B, QHE/B, QHM/A, QU/B, QXA/B, SD/B, SJ/B, SJK/B
		D	16100-ZM7-G15	CARBURETOR ASSY. (BF32E E) ...	1	1562768	-----	QC/B, QHA/B, QHE/B, QHM/A, QU/B, QXA/B, SD/B, SJ/B, SJK/B, WK4

NOTE A:PART NO. CHANGE D:NEWLY PROVIDED E:PART NO.DELETION K:REQUIRED NO. CORRECTION L:APPLICATION SERIAL NO. CORRECTION
T:APPLICATION CORRECTION Z:REMARKS CHANGE

October 31, 2004



PARTS CATALOG NEWS

Honda Motor Co., Ltd. Service Division

PARTS CATALOG - CORRECTED

Printed in Japan

CODE NO.	14ZM70E6
PARTS CATALOG NEWS	GXH50
NEWS NO.	005

Block No.	Ref. No.	Note	Part No.	Description	Reqd. QTY	Serial No.	Parts catalog code
E-17	9	T	95002-02080	CLIP, TUBE (B8)	0	-----	VSW, VSW4

NOTE A:PART NO. CHANGE D:NEWLY PROVIDED E:PART NO.DELETION K:REQUIRED NO. CORRECTION L:APPLICATION SERIAL NO. CORRECTION
T:APPLICATION CORRECTION Z:REMARKS CHANGE

November 07, 2004



PARTS CATALOG NEWS

Honda Motor Co., Ltd. Service Division

PARTS CATALOG - CORRECTED

Printed in Japan

CODE NO.	14ZM70E6
PARTS CATALOG NEWS	GXH50
NEWS NO.	006

Block No.	Ref. No.	Note	Part No.	Description	Reqd. QTY	Serial No.	Parts catalog code
					GXH 50		
E-7	7	E	13310-ZM7-U10	*PARTS NO. DELETION			
		A	13310-ZM7-U11	CRANKSHAFT COMP.	1	-----	VSW, VSW4

NOTE A:PART NO. CHANGE D:NEWLY PROVIDED E:PART NO.DELETION K:REQUIRED NO. CORRECTION L:APPLICATION SERIAL NO. CORRECTION
T:APPLICATION CORRECTION Z:REMARKS CHANGE

November 21, 2004



PARTS CATALOG NEWS

Honda Motor Co., Ltd. Service Division

PARTS CATALOG - CORRECTED

Printed in Japan

CODE NO.	14ZM70E6
PARTS CATALOG NEWS	GXH50
NEWS NO.	007

Block No.	Ref. No.	Note	Part No.	Description	Reqd. QTY	Serial No.	Parts catalog code
					GXH 50		
E-3	15	T	12367-ZE6-010	FILTER, BREATHER	1	1562768 -----	QC/B, QEB2/A, QEB4/A, QHA/B, QHE/B, QHM/A, QU/B, QXA/B, SD/B, SE/B SJ/B, SJK/B, SPB/B, SPB4/A, SXA/B, WK4
E-9	16	T	12209-ZM7-003	SEAL, VALVE STEM	1	1562768 -----	QC/B, QEB2/A, QEB4/A, QHA/B, QHE/B, QHM/A, QU/B, QXA/B, SD/B, SE/B SJ/B, SJK/B, SPB/B, SPB4/A, SXA/B, WK4
E-14	9	L	16100-ZM7-804	CARBURETOR ASSY. (BF32C D) ...	1	1537632 1562767	SE/B, SPB/B, SPB4/A, SXA/B
		A	16100-ZM7-805	CARBURETOR ASSY. (BF32C E) ...	1	1562768 -----	SE/B, SPB/B, SPB4/A, SXA/B
E-28	11	L	87135-ZE2-020	LABEL, E-SPEC (15.5X27.5)	1	----- 1562767	QEB4/A, QHE/B, SE/B, SPB/B, WK4

NOTE A:PART NO. CHANGE D:NEWLY PROVIDED E:PART NO.DELETION K:REQUIRED NO. CORRECTION L:APPLICATION SERIAL NO. CORRECTION
T:APPLICATION CORRECTION Z:REMARKS CHANGE

January 02, 2005



PARTS CATALOG NEWS

Honda Motor Co., Ltd. Service Division

PARTS CATALOG - CORRECTED

Printed in Japan

CODE NO.	14ZM70E6
PARTS CATALOG TITLE	GXH50
NEWS NO.	008

Block No.	Ref. No.	Note	Part No.	Description	Reqd. QTY	Serial No.	Parts catalog code
E-28	6	T	87528-ZG0-W40	MARK, COCK (EXTERNAL)	0	-----	VSW, VSW4

NOTE A:PART NO. CHANGE D:NEWLY PROVIDED E:PART NO.DELETION K:REQUIRED NO. CORRECTION L:APPLICATION SERIAL NO. CORRECTION
 T:APPLICATION CORRECTION Z:REMARKS CHANGE

February 20, 2005



PARTS CATALOG NEWS

Honda Motor Co., Ltd. Service Division

PARTS CATALOG - CORRECTED

Printed in Japan

CODE NO.	14ZM70E6
PARTS CATALOG TITLE	GXH50
NEWS NO.	009

Block No.	Ref. No.	Note	Part No.	Description	Reqd. QTY	Serial No.	Parts catalog code
					GXH 50		
E-17	2	L	17511-ZM7-000	TANK, FUEL	1	----- 1574706	QC/B, QEB2/A, QEB4/A, QU/B, QXA/B, SD/B, SE/B, SJ/B, SJK/B, SPB/B SPB4/A, SXA/B, WK4
			D	17511-ZM7-010	1	1574707 -----

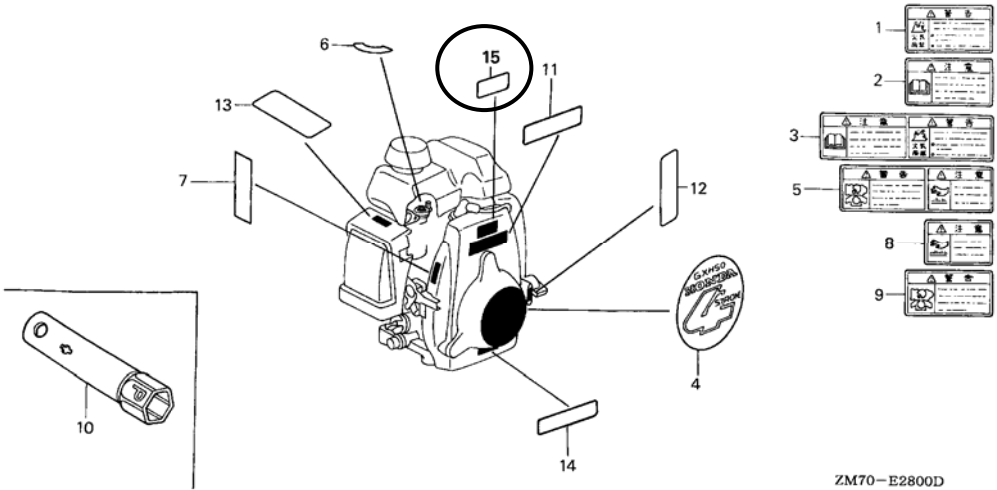
NOTE A:PART NO. CHANGE D:NEWLY PROVIDED E:PART NO.DELETION K:REQUIRED NO. CORRECTION L:APPLICATION SERIAL NO. CORRECTION
T:APPLICATION CORRECTION Z:REMARKS CHANGE

PARTS CATALOG NEWS

BOOKNo. : 14ZM70E6

Block No.	Ref. No.	Note	Part No.	Description	Reqd. QTY	Serial No.	Parts catalog code
-----------	----------	------	----------	-------------	-----------	------------	--------------------

E-28 LABELS



E-28	15	D	87114-ZH7-000	LABEL, WARNING (NOT CERTIFIED FOR SALE)	1	1573953 -----	SD/B, SJ/B, SJK/B
------	----	---	---------------	--	---	---------------	-------------------

NOTE A:PART NO. CHANGE D:NEWLY PROVIDED E:PART NO.DELETION K:REQUIRED NO. CORRECTION L:APPLICATION SERIAL NO. CORRECTION
T:APPLICATION CORRECTION Z:REMARKS CHANGE

May 22, 2005



PARTS CATALOG NEWS

Honda Motor Co., Ltd. Service Division

PARTS CATALOG - CORRECTED

Printed in Japan

CODE NO.	14ZM70E6
PARTS CATALOG TITLE	GXH50
NEWS NO.	010

Block No.	Ref. No.	Note	Part No.	Description	Reqd. QTY	Serial No.	Parts catalog code
					GXH 50		
E-3	7	L	90019-883-000	BOLT, FLANGE, 5X10	4	----- 1583133	VSW, VSW4
			90003-892-000	BOLT, FLANGE, 5X12	4	1583134 -----	VSW, VSW4
E-6	1	L	11340-ZM7-020	COVER COMP., CRANKCASE SIDE ..	1	----- 1607578	VSW, VSW4
			11340-ZM7-U10	1	1607579 -----	VSW, VSW4
E-20	7	L	36100-ZE1-015	SWITCH ASSY., ENGINE STOP	1	----- 1595709	QXA/B
			35120-Z0D-V81	1	1595710 -----	QXA/B
E-28	12	L	87501-ZL8-000	MARK, ENGINE SWITCH INDICATION	1	----- 1602255	QEB2/A
			87501-ZM7-V40	1	1602256 -----	QEB2/A
	15	T	87114-ZH7-000	LABEL, WARNING (NOT CERTIFIED FOR SALE)	1	1573953 -----	VSW

NOTE A:PART NO. CHANGE D:NEWLY PROVIDED E:PART NO.DELETION K:REQUIRED NO. CORRECTION L:APPLICATION SERIAL NO. CORRECTION
T:APPLICATION CORRECTION Z:REMARKS CHANGE

January 29, 2006



PARTS CATALOG NEWS

Honda Motor Co., Ltd. Service Division

PARTS CATALOG - CORRECTED

Printed in Japan

CODE NO.	14ZM70E6
PARTS CATALOG TITLE	GXH50
NEWS NO.	011

Block No.	Ref. No.	Note	Part No.	Description	Reqd. QTY	Serial No.	Parts catalog code
E-28	11	L	87135-ZE2-020	LABEL, E-SPEC (15.5X27.5)	1	----- 1654491	QU/B, SD/B, SJ/B, SJK/B, VSW

NOTE A:PART NO. CHANGE D:NEWLY PROVIDED E:PART NO.DELETION K:REQUIRED NO. CORRECTION L:APPLICATION SERIAL NO. CORRECTION
T:APPLICATION CORRECTION Z:REMARKS CHANGE

February 05, 2006



PARTS CATALOG NEWS

Honda Motor Co., Ltd. Service Division

PARTS CATALOG - CORRECTED

Printed in Japan

CODE NO.	14ZM70E6
PARTS CATALOG TITLE	GXH50
NEWS NO.	012

Block No.	Ref. No.	Note	Part No.	Description	Reqd. QTY	Serial No.			Parts catalog code
					GXH 50				
E-14	26	L	16016-ZH7-W01	SCREW SET, PILOT (CARBURETOR NO.)	1	BF32E E	BF32E E	SD/B, SJ/B, SJK/B	
		D	16016-ZH8-W01	SCREW SET (CARBURETOR NO.)	1	BF32E F	-----	SD/B, SJ/B, SJK/B	

NOTE A:PART NO. CHANGE D:NEWLY PROVIDED E:PART NO.DELETION K:REQUIRED NO. CORRECTION L:APPLICATION SERIAL NO. CORRECTION
T:APPLICATION CORRECTION Z:REMARKS CHANGE



PARTS CATALOG NEWS

Honda Motor Co., Ltd. Service Division

PARTS CATALOG - CORRECTED

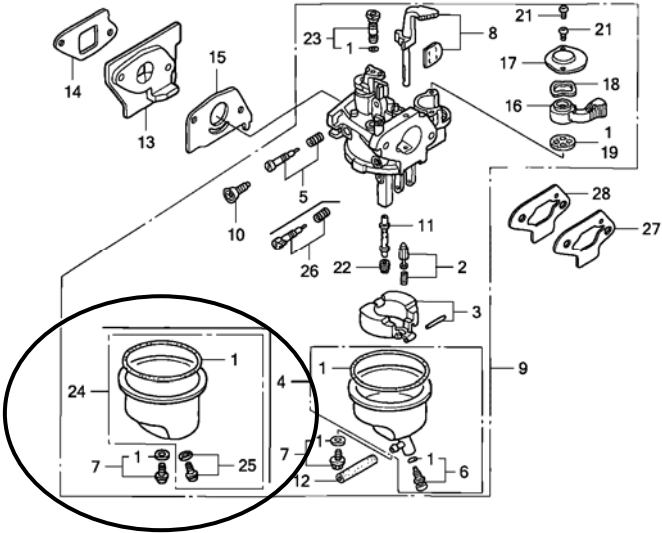
Printed in Japan

CODE NO.	14ZM70E6
PARTS CATALOG TITLE	GXH50
NEWS NO.	013

Block No.	Ref. No.	Note	Part No.	Description	Reqd. QTY	Serial No.	Parts catalog code
					GXH 50		

E-14 CARBURETOR

ILLUSTRATION CORRECTED



ZM70E1400B

NOTE A:PART NO. CHANGE D:NEWLY PROVIDED E:PART NO.DELETION K:REQUIRED NO. CORRECTION L:APPLICATION SERIAL NO. CORRECTION
T:APPLICATION CORRECTION Z:REMARKS CHANGE

April 16, 2006



PARTS CATALOG NEWS

Honda Motor Co., Ltd. Service Division

PARTS CATALOG - CORRECTED

Printed in Japan

CODE NO.	14ZM70E6
PARTS CATALOG TITLE	GXH50
NEWS NO.	014

Block No.	Ref. No.	Note	Part No.	Description	Reqd. QTY	Serial No.		Parts catalog code
					GXH 50			
E-14	9	L	16100-ZM7-G15	CARBURETOR ASSY. (BF32E E) ...	1	1562768	1667594	SD/B, SJ/B, SJK/B
		T	16100-ZM7-G16	CARBURETOR ASSY. (BF32E F) ...	1	1667595	-----	SD/B, SJ/B, SJK/B

NOTE A:PART NO. CHANGE D:NEWLY PROVIDED E:PART NO.DELETION K:REQUIRED NO. CORRECTION L:APPLICATION SERIAL NO. CORRECTION
T:APPLICATION CORRECTION Z:REMARKS CHANGE

October 01, 2006



PARTS CATALOG NEWS

Honda Motor Co., Ltd. Service Division

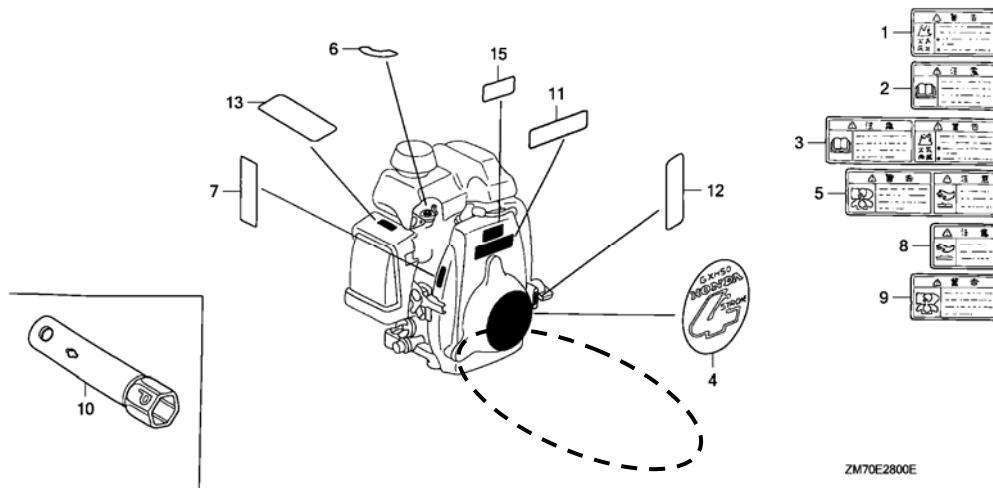
PARTS CATALOG - CORRECTED

Printed in Japan

CODE NO.	14ZM70E6
PARTS CATALOG NEWS	GXH50
NEWS NO.	015

Block No.	Ref. No.	Note	Part No.	Description	Reqd. QTY	Serial No.	Parts catalog code
					GXH 50		

E-28 LABELS



ZM70E2800E

E-28 14 E 87637-ZM3-800 *PARTS NO. DELETION

NOTE A:PART NO. CHANGE D:NEWLY PROVIDED E:PART NO.DELETION K:REQUIRED NO. CORRECTION L:APPLICATION SERIAL NO. CORRECTION
T:APPLICATION CORRECTION Z:REMARKS CHANGE

April 16, 2007



PARTS CATALOG NEWS

Honda Motor Co., Ltd. Service Division

PARTS CATALOG - CORRECTED

Printed in Japan

CODE NO.	14ZM70E6
PARTS CATALOG NEWS	GXH50
NEWS NO.	016

Block No.	Ref. No.	Note	Part No.	Description	Reqd. QTY	Serial No.		Parts catalog code
					GXH 50			
E-14	8	L	16044-Z0D-003	CHOKE SET (CARBURETOR NO.)	1	-----	BF31H A	VSW4
			T	16044-ZM7-801 (CARBURETOR NO.)	1	BF31H B	-----
	9	Z	16100-ZM7-U31	CARBURETOR ASSY (BF31H A/B)	1	-----	-----	VSW4

PARTS NAME CORRECTED

NOTE A:PART NO. CHANGE D:NEWLY PROVIDED E:PART NO.DELETION K:REQUIRED NO. CORRECTION L:APPLICATION SERIAL NO. CORRECTION
T:APPLICATION CORRECTION Z:REMARKS CHANGE

May 27, 2007



PARTS CATALOG NEWS

Honda Motor Co., Ltd. Service Division

PARTS CATALOG - CORRECTED

Printed in Japan

CODE NO.	14ZM70E6
PARTS CATALOG NEWS	GXH50
NEWS NO.	017

Block No.	Ref. No.	Note	Part No.	Description	Reqd. QTY	Serial No.	Parts catalog code
					GXH 50		
E-20	1	L	30500-ZM7-004	COIL ASSY., IGNITION	1	----- 1730549	SD/B, SDK, SJ/B, VSW
			D	30500-ZM7-014	1	1730550 -----

NOTE A:PART NO. CHANGE D:NEWLY PROVIDED E:PART NO.DELETION K:REQUIRED NO. CORRECTION L:APPLICATION SERIAL NO. CORRECTION
T:APPLICATION CORRECTION Z:REMARKS CHANGE

June 24, 2007



PARTS CATALOG NEWS

Honda Motor Co., Ltd. Service Division

PARTS CATALOG - CORRECTED

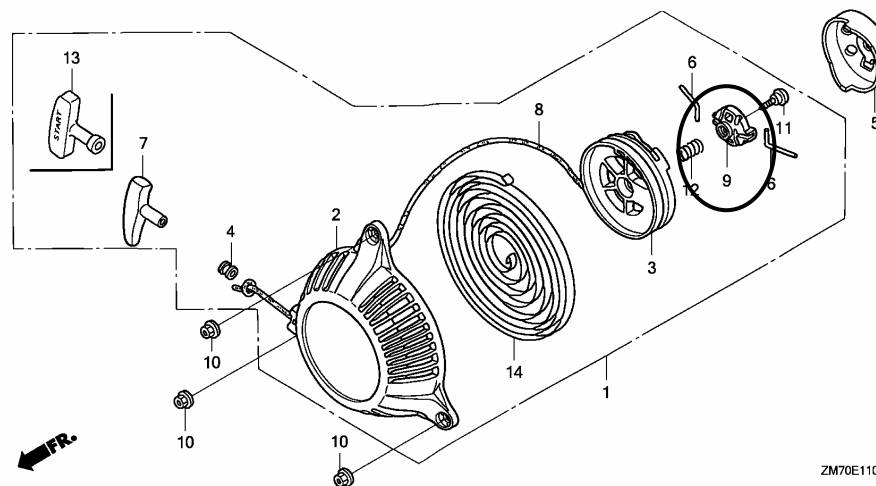
Printed in Japan

CODE NO.	14ZM70E6
PARTS CATALOG NEWS	GXH50
NEWS NO.	018

Block No.	Ref. No.	Note	Part No.	Description	Reqd. QTY	Serial No.	Parts catalog code
					GXH 50		

E-11 RECOIL STARTER

ILLUSTRATION CORRECTED



ZM70E1100C

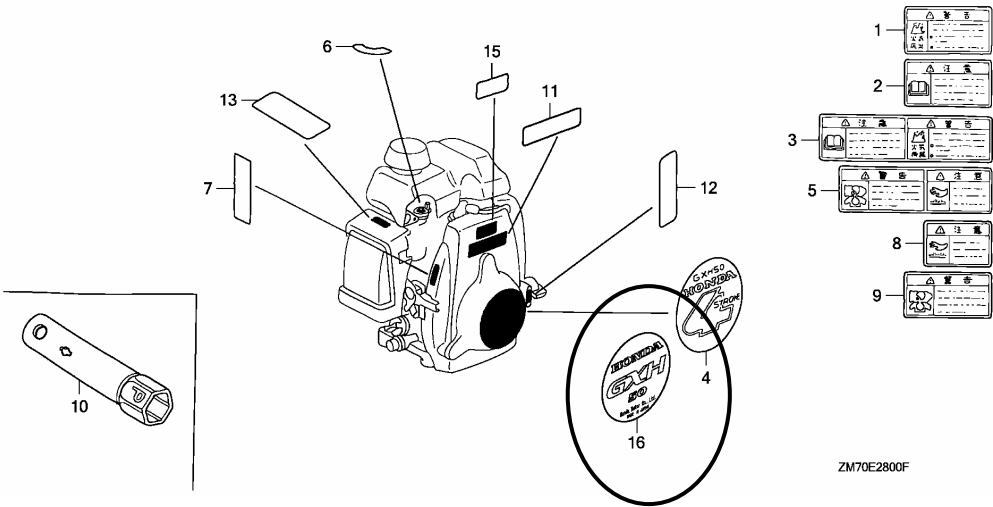
NOTE A:PART NO. CHANGE D:NEWLY PROVIDED E:PART NO.DELETION K:REQUIRED NO. CORRECTION L:APPLICATION SERIAL NO. CORRECTION
T:APPLICATION CORRECTION Z:REMARKS CHANGE

PARTS CATALOG NEWS

BOOKNo. : 14ZM70E6

Block No.	Ref. No.	Note	Part No.	Description	Reqd. QTY	Serial No.	Parts catalog code
-----------	----------	------	----------	-------------	-----------	------------	--------------------

E-28 LABELS



ZM70E2800F

E-28	4	L	87521-ZM7-010	EMBLEM (4STROKE)	1	----- 1688364	SD/B, SDK, SJ/B
	16	D	87521-ZM7-020	EMBLEM (GXH50)	1	1688365 -----	SD/B, SDK, SJ/B

NOTE A:PART NO. CHANGE D:NEWLY PROVIDED E:PART NO.DELETION K:REQUIRED NO. CORRECTION L:APPLICATION SERIAL NO. CORRECTION T:APPLICATION CORRECTION Z:REMARKS CHANGE

July 22, 2007



PARTS CATALOG NEWS

Honda Motor Co., Ltd. Service Division

PARTS CATALOG - CORRECTED

Printed in Japan

CODE NO.	14ZM70E6
PARTS CATALOG NEWS	GXH50
NEWS NO.	019

Block No.	Ref. No.	Note	Part No.	Description	Reqd. QTY	Serial No.		Parts catalog code
					GXH 50			
E-20	6	L	35480-ZM7-801	SWITCH ASSY., OIL LEVEL	1	-----	1742797	VSW
		D	35480-ZM7-802	1	-----	1742798	VSW

NOTE A:PART NO. CHANGE D:NEWLY PROVIDED E:PART NO.DELETION K:REQUIRED NO. CORRECTION L:APPLICATION SERIAL NO. CORRECTION
T:APPLICATION CORRECTION Z:REMARKS CHANGE

October 07, 2007



PARTS CATALOG NEWS

Honda Motor Co., Ltd. Service Division

PARTS CATALOG - CORRECTED

Printed in Japan

CODE NO.	14ZM70E6
PARTS CATALOG NEWS	GXH50
NEWS NO.	020

Block No.	Ref. No.	Note	Part No.	Description	Reqd. QTY	Serial No.	Parts catalog code	
					GXH 50			
E-3-10	1	E	11300-ZM7-000	*PARTS NO. DELETION				
		E	11300-ZM7-800	*PARTS NO. DELETION				
		T	11300-ZM7-406	CASE ASSY., OIL	1	-----	-----	QC, QEB2, QEB4, QU, SD, SE, SJ, SJK, SPB
		T	11300-ZM7-407	1	-----	-----	QHA, QHE, QXA, SXA

NOTE A:PART NO. CHANGE D:NEWLY PROVIDED E:PART NO.DELETION K:REQUIRED NO. CORRECTION L:APPLICATION SERIAL NO. CORRECTION
T:APPLICATION CORRECTION Z:REMARKS CHANGE

January 31, 2008



PARTS CATALOG NEWS

Honda Motor Co., Ltd. Service Division

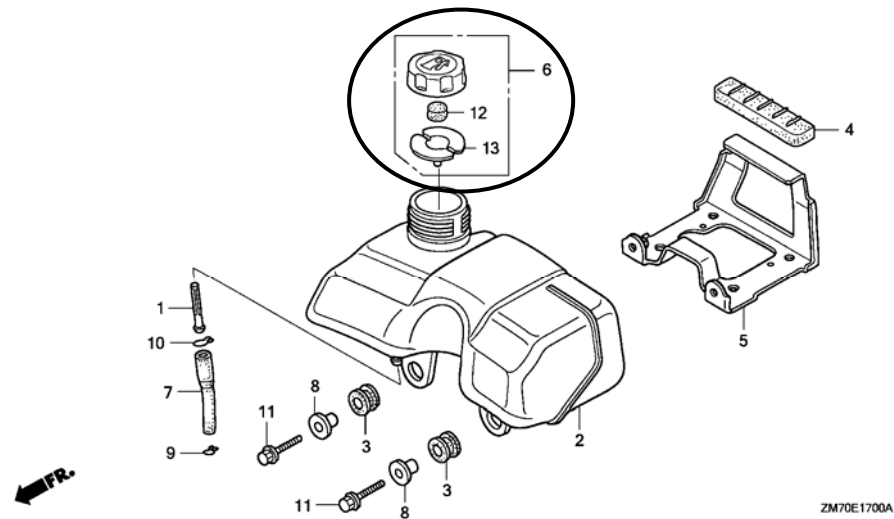
PARTS CATALOG - CORRECTED

Printed in Japan

CODE NO.	14ZM70E6
PARTS CATALOG NEWS	GXH50
NEWS NO.	021

Block No.	Ref. No.	Note	Part No.	Description	Reqd. QTY	Serial No.	Parts catalog code
					GXH 50		

E-17 FUEL TANK



NOTE A:PART NO. CHANGE D:NEWLY PROVIDED E:PART NO.DELETION K:REQUIRED NO. CORRECTION L:APPLICATION SERIAL NO. CORRECTION
T:APPLICATION CORRECTION Z:REMARKS CHANGE

PARTS CATALOG NEWS

BOOKNo. : 14ZM70E6

Block No.	Ref. No.	Note	Part No.	Description	Reqd. QTY	Serial No.		Parts catalog code
					GXH 50			
E-17	12	D	17622-ZL8-003	SPONGE, FUEL CAP BREATHER	1	-----	-----	QC, QC/A, QC/B, QEB2, QEB2/A, QEB4, QEB4/A, QU, QU/A, QU/B, QXA QXA/A, QXA/B, SD, SD/A, SD/B, SDK, SE, SE/A, SE/B, SJ, SJ/A, SJ/B SJK, SJK/A, SJK/B, SPB, SPB/A, SPB/B, SPB4, SPB4/A, SXA, SXA/A SXA/B, WK4
	13	D	17624-ZL8-003	PACKING, FUEL CAP	1	-----	-----	QC, QC/A, QC/B, QEB2, QEB2/A, QEB4, QEB4/A, QU, QU/A, QU/B, QXA QXA/A, QXA/B, SD, SD/A, SD/B, SDK, SE, SE/A, SE/B, SJ, SJ/A, SJ/B SJK, SJK/A, SJK/B, SPB, SPB/A, SPB/B, SPB4, SPB4/A, SXA, SXA/A SXA/B, WK4

NOTE A:PART NO. CHANGE D:NEWLY PROVIDED E:PART NO.DELETION K:REQUIRED NO. CORRECTION L:APPLICATION SERIAL NO. CORRECTION
T:APPLICATION CORRECTION Z:REMARKS CHANGE

October 11, 2009



PARTS CATALOG NEWS

Honda Motor Co., Ltd. Service Division

PARTS CATALOG - CORRECTED

Printed in Japan

CODE NO.	14ZM70E6
PARTS CATALOG NEWS	GXH50
NEWS NO.	022

Block No.	Ref. No.	Note	Part No.	Description	Reqd. QTY	Serial No.	Parts catalog code
					GXH 50		
E-15	5	L	17230-ZM7-000	COVER COMP., AIR CLEANER	1	----- 1860064	SD/B, SDK, SJ/B, VSW, VSW2
		D	17230-ZM7-010	1	1860065 -----	SD/B, SDK, SJ/B, VSW, VSW2
	6	L	17231-ZM7-000	COVER, AIR CLEANER	1	----- 1860064	SD/B, SDK, SJ/B, VSW, VSW2
		D	17231-ZM7-010	1	1860065 -----	SD/B, SDK, SJ/B, VSW, VSW2

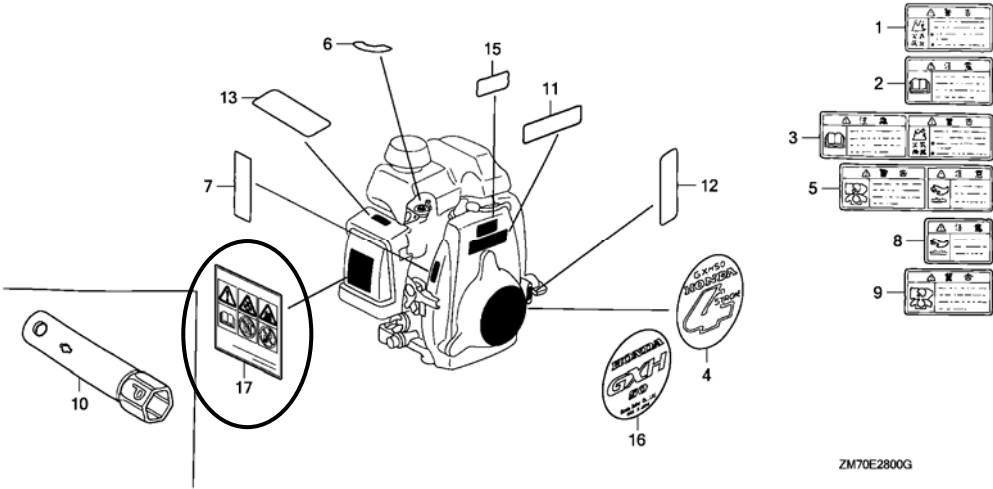
NOTE A:PART NO. CHANGE D:NEWLY PROVIDED E:PART NO.DELETION K:REQUIRED NO. CORRECTION L:APPLICATION SERIAL NO. CORRECTION
T:APPLICATION CORRECTION Z:REMARKS CHANGE

PARTS CATALOG NEWS

BOOKNo. : 14ZM70E6

Block No.	Ref. No.	Note	Part No.	Description	Reqd. QTY	Serial No.	Parts catalog code
-----------	----------	------	----------	-------------	-----------	------------	--------------------

E-28 LABEL



ZM70E2800G

E-28	17	D	87519-Z4C-000	MARK, OPERATOR CAUTION (PICTOGRAPH)	1	1860065 -----	SD/B, SDK, SJ/B, VSW, VSW2
------	----	---	---------------	--	---	---------------	----------------------------

NOTE A:PART NO. CHANGE D:NEWLY PROVIDED E:PART NO.DELETION K:REQUIRED NO. CORRECTION L:APPLICATION SERIAL NO. CORRECTION
T:APPLICATION CORRECTION Z:REMARKS CHANGE